

Operation Manual

PX-9116 Matrix



interM

Unpacking and Installation

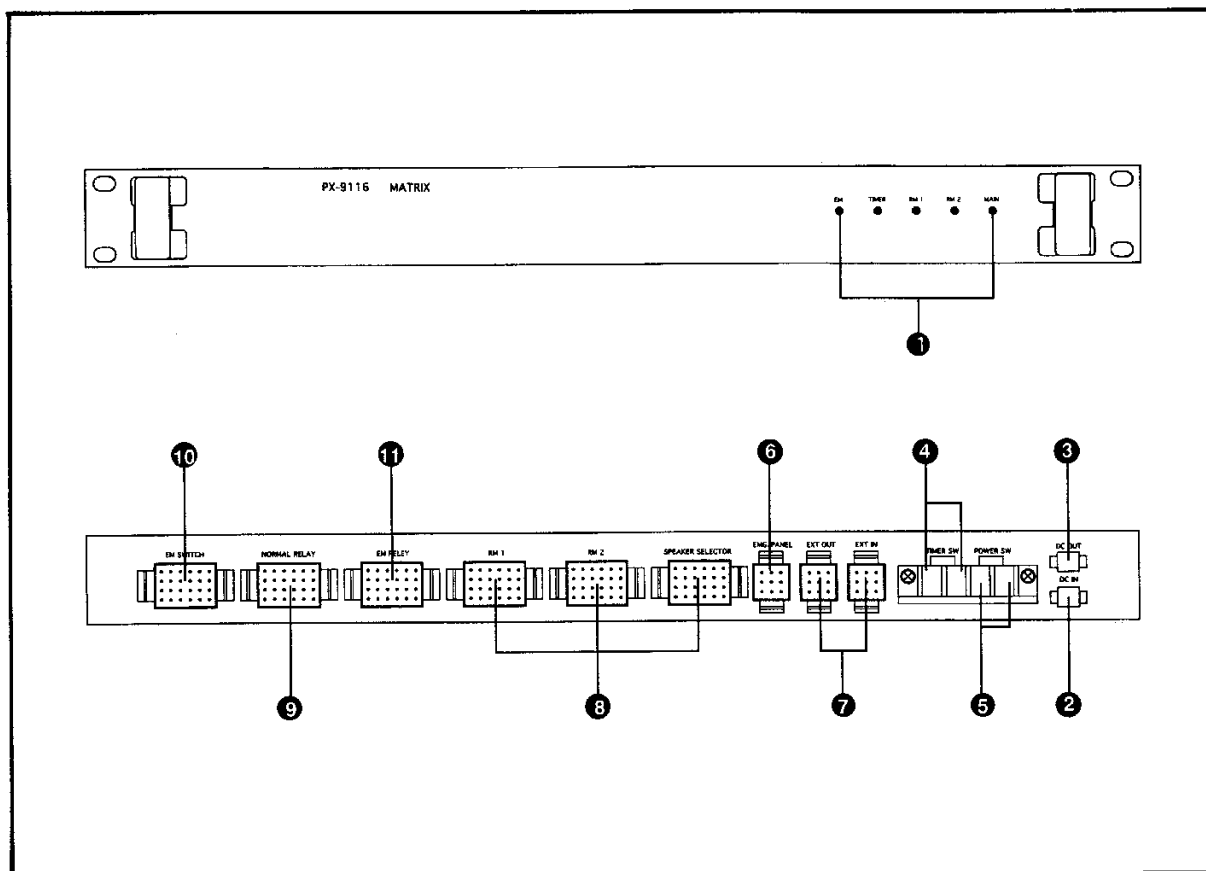
Although it is neither complicated to install nor difficult to operate your matrix, a few minutes of your time is required to read this manual for a properly wired installation and becoming familiar with its many features and how to use them.

Please take a great care in unpacking your set and do not discard the carton and other packing materials. They may be needed when moving your set and are required if it ever becomes necessary to return your set for service. Never place the unit near radiators, in front of heating vents, in excessive humid or dusty location to avoid early damage and for your years of quality use. Connect your complementary component as illustrated in the following page.

Features

- **PRIORITY CONTROL**
You can control the priority of operating mode emergency, timer, remote 1, remote 2, business by using this matrix.
- **TWO-WIRE SYSTEM AND THREE-WIRE SYSTEM LINE**
You can control the speaker relay line on the two-wire system and three-wire system when fire or emergency.
- **EXTENSION FUNCTION**
You can connect easily to the next model (PX-9116 made by our company) by the connector, when extend over sixteen line.
- * This model should be used with concerning equipment (emergency switcher-our model ES-9116, relay group-our model RG-9116, emergency panel-our model EP-9216)

Front Panel & Rear Panel Controls



1. BROADCASTING INDICATORS

The relevant LED indicate the any broadcasting status which are composed of general, remote 1, remote 2, timer, emergency broadcasting.

2. DC 24V INPUT CONNECTOR

This is for connecting the DC 24V emergency power.

3. DC 24V OUTPUT CONNECTOR

This is for connecting to DC input connector of the next emergency model for extension.

4. TIMER SWITCH TERMINAL

This is for connecting the timer switch which is located in switch terminal on rear panel of PW-9242 made by our company. When system operating this control to relay group (RG-9116 made by our company) and the emergency panel.

5. POWER SWITCH CONNECTION TERMINAL

This is connected with remote control of power distributor (PD-9212 made by our company)

6. EMERGENCY PANEL CONNECTOR

This is control the EP-9216 by connecting the it's matrix terminal.

7. EXTENSION CONNECTOR

This is for connecting to the next model when extend over sixteen line.

8. REMOTE 1, REMOTE 2, SPEAKER SELECTOR CONNECTOR

This is to be connected to the speaker selector (PS-9116I made by our company) for selecting the 16 speakers after this equipment is connected with RG-9116 (Relay group)

9. NORMAL RELAY CONNECTOR

This is for connecting the relay group (RG-9116 made by our company). It is connected with the normal relay connector in relay group.

10. EMERGENCY RELAY CONNECTOR

This is for connecting the relay group (RG-9116 made by our company). It is connected with the emergency relay connector in relay group.

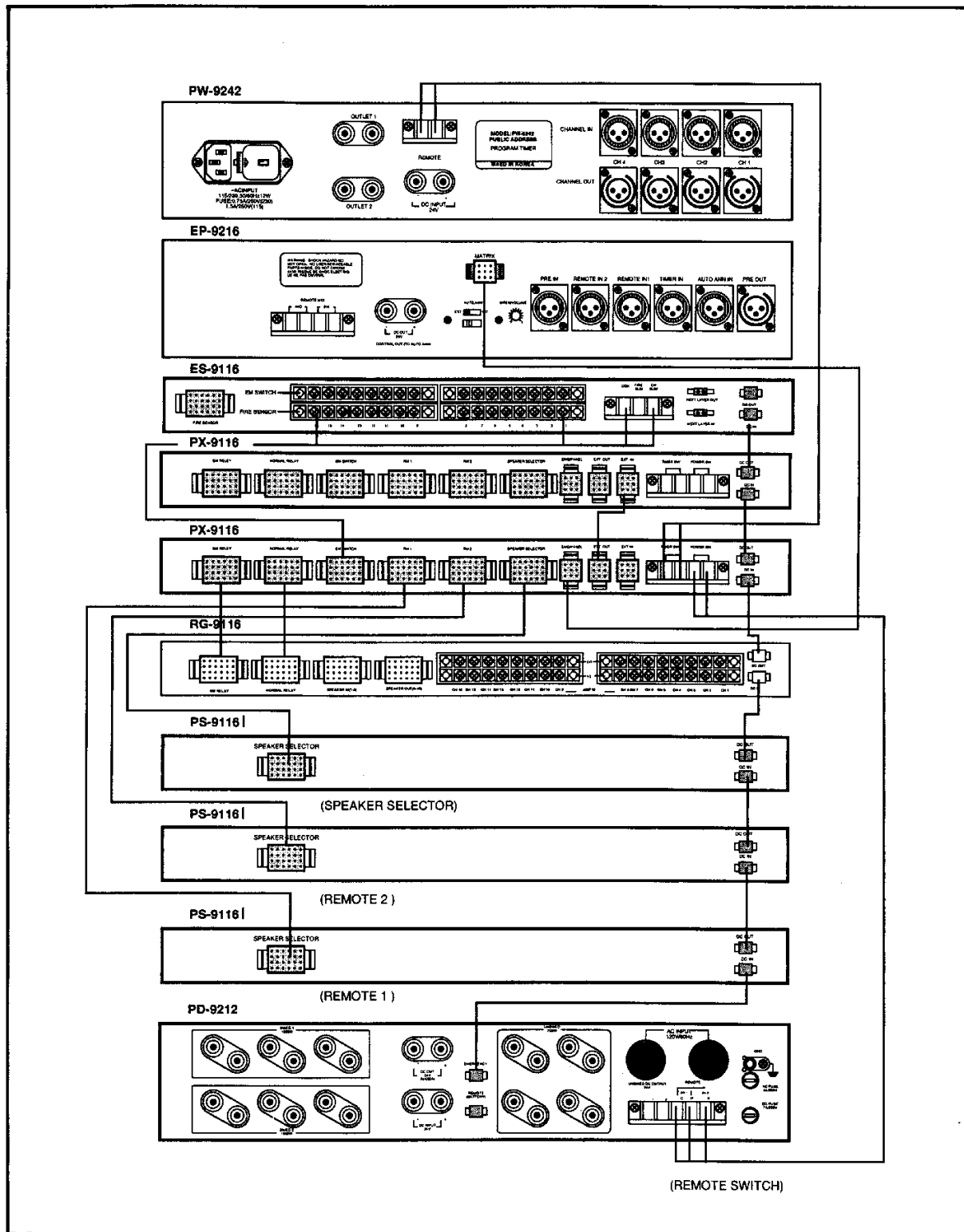
11. EMERGENCY SWITCHER CONNECTOR

This is for connecting the emergency switcher (ES-9116 made by our company). It is connected with the emergency switcher terminal in emergency switcher.

*** Notes****• THREE-WIRE SYSTEM**

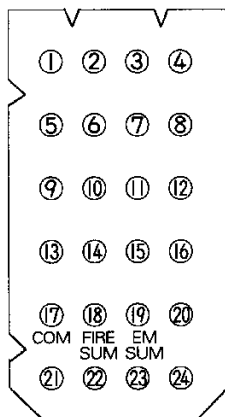
On firing, select the emergency speaker switch, the main amplifier output is operating through the emergency speaker connector line of relay group-our model RG-9116. The emergency speaker line be used the Em relay connector of PX-9116 rear panel and the output A.B connector with the emergency speaker line of RG-9116 rear panel.

Connections



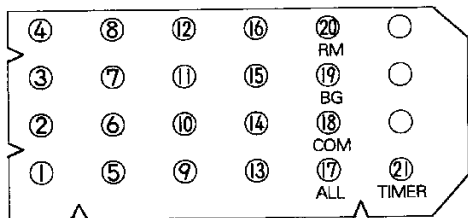
Suggestions on Installation of a Rack

1. Turn-off the power before installation of the system.
2. Connect the timer switch terminal on rear panel to timer switch of PW-9242 rear panel.
3. Connect the power switch on rear panel to remote power switch terminal of PD-9212 rear panel.
4. Connect the remote 1, terminal on rear panel to remote connector of PS-9116I rear panel after reference of below table 2 on the same method, connect the remote 2 to indirect speaker selector.
5. Connect the emergency relay and the normal relay connector on rear panel to emergency relay and normal relay connector of RG-9116 rear panel.
6. Connect the emergency switcher connector on rear panel to emergency switcher terminal of ES-9116 rear panel after reference of below table 1.
7. Connect the EMG connection terminal on rear panel to matrix connector of EP-9216 rear panel after reference of below table 3.

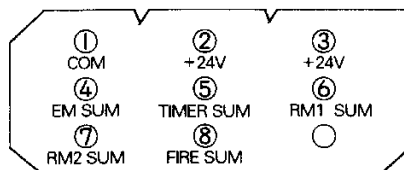


- PIN 1 ~ PIN 16 : Connect the pins in emergency switcher connector to emergency switcher terminal of ES-9116 rear panel.
- PIN 17 : Connect the COM pin to COM terminal of ES-9116 rear panel.
- PIN 18 : Connect the FIRE SUM pin to FIRE SUM terminal of ES-9116 rear panel.
- PIN 19 : Connect the EM SUM pin to EM SUM terminal of ES-9116 rear panel.

**TABLE 1 EMERGENCY SWITCHER
CONNECTOR PIN NO. & FUNCTION**



**TABLE 2 REMOTE 1, REMOTE 2,
SPEAKER SELECTOR
CONNECTOR PIN NO.
& FUNCTION**



**TABLE 3 EMG CONNECTOR PIN NO. &
FUNCTION**

Operating Procedure

1. Supply the power to this system.
2. The RG-9116, EP-9216 are controlled by the signal of speaker selector, remote 1, remote 2, timer, fire sensor.

* The system is controlled by priority.

PRIORITY	CONTROL SIGNAL
1	FIRE SENSOR
2	EMERGENCY SPEAKER SELECTOR
3	TIMER
4	REMOTE 1
5	REMOTE 2
6	SPEAKER SELECTOR

Specifications

- ELECTRICAL
 - Speaker Relay Control 16 Line
 - Program Exchange Mode 5
 - Priority 1. Emergency
2. Timer
3. Remote 1
4. Remote 2
5. Business
 - Indicator Mode 5
- GENERAL
 - Power Source DC 24V
 - Dimensions 482(W) × 44(H) × 280(D) mm
 - Weight (Net) 4.4 kg



Inter-M, Ltd. (Korea) began operations in 1983.

Since then, Inter-M has grown to become one of the largest manufacturers of professional audio and commercial sound electronics equipment in the world.

Inter-M has gained worldwide recognition for its own branded products, as well as private label manufacturing of electronics sold under other names (OEM).

The company is no longer just a Korean company, but rather a global company that is truly international in scope, with factories and offices in Korea and China, and sales and marketing operations located in Japan, Europe, and the U.S.A.

With more than 850 employees around the globe, Inter-M is well-poised for further growth and expansion.

INTER-M AMERICAS, INC.

1 EAST BEACON LIGHT LANE CHESTER, PA USA 19013-4409

TEL : 1-610-874-8870, FAX : 1-610-874-8890

Home Page : <http://www.inter-m.net>, E-mail : service@inter-m.net

INTER-M Corporation

SEOUL OFFICE: 653-5 BANGHAK-DONG, DOBONG-KU, SEOUL, KOREA

TEL : 82-2-2289-8140~8, FAX : 82-2-2289-8149

Home Page : <http://www.inter-m.com>, E-mail : export@inter-m.com