

SERVICE

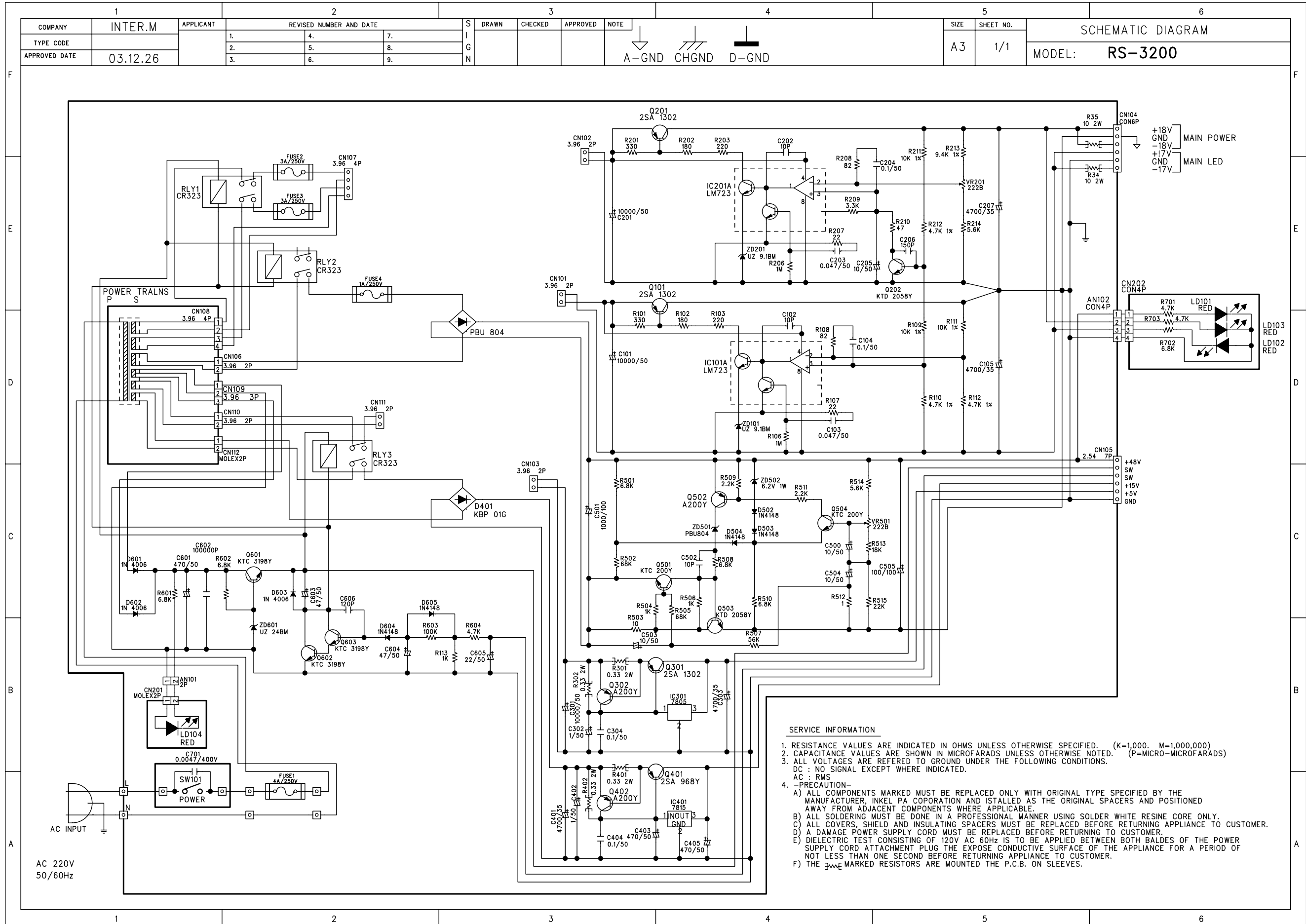
MANUAL

P O W E R

SUPPLY

RS-3200

interM



ELECTRICAL PARTS LIST (RS-3200)

Ref No.	Part NO.	Description	Value	Qty
D401	2058100979	DIODE BRIDGE (KBP01G/KBP153G)	KBP 01G	1
D501	2058100988	DIODE BRIDGE PBU 804	PBU 804	1
C701	3549472407	CAP DE2E3KH472MA4B	0.0047/400V	1
C103 C203	3509473530-T	CAP CE F 0.047UF 50V Z	0.047/50	2
C104 C204 C304 C404 C602	3509104530-T	CAP CE F 0.1UF 50V Z	0.1/50	5
C102 C202 C502	3529100311-A	CAP CE SL 10PF 50V J AXIAL	10P	3
C606	3509121130-T	CAP CE SL 120P 50V J	120P	1
C206	3509151231-A	CAP CE B 150PF 50V K AXIAL	150P	1
CN105	4428598307	CONNECTOR WAFER LW-0640-7P	2.54 7P	1
CN104	4428598306	CONNECTOR WAFER LW-0640-6P	CON6P	1
CN109	4428598303	CONNECTOR WAFER LW-0640-3P	3.96 3P	1
AN102	4428598304	CONNECTOR WAFER LW-0640-3P	CON4P	1
CN202	4355894621	CON ASS'Y 4P	CON4P	1
	4465998210	TERMINAL(250)PCB TAB	250TAB	6
L N	4205999010	TERMINAL(#250)ASS'Y	250	2
AN101	4428595002	LW5267/LWB0640/2.5MM-02P	2P	1
CN106 CN110	4428596602	WAFER LW-1143-02P	3.96 2P	2
CN101-103	4428596602	WAFER LW-1143-02P	3.96 2P	3
CN111	4428596602	WAFER LW-1143-02P	3.96 2P	1
CN108	4428596604	LOCK WAFER LW-1143-04P	3.96 4P	1
CN107	4428596604	LOCK WAFER LW-1143-04P	3.96 4P	1
D601-603	2058100996	DIODE RECTIFIER LT1N4006(4007)	1N 4006	3
D502-504 D604 D606	2058304100	DIODE IN4148M	1N4148	5
C302 C402	3409210971-T	CAP AF RSG 1UF 50V 5 P	1/50	2
C205 C500 C503-504	3409210071-T	CAP AF RSG 10UF 50V 5 P	10/50	4
C505	3408210191	CAP RSA 100UF 100V SNAP 13 P	100/100	1
C501	3419010298	CAP AF 1000UF 100V 22 P	1000/100	1
C101 C201 C301	3419510378	CAP AF HS 10000UF 50V 30 P LUG	10000/50	3
C605	3409222071-T	CAP AF RSG 22UF 50V 5 P	22/50	1
C603-604	3409247071-T	CAP AF RSG 47UF 50V 6 P	47/50	2
C403 C405 C601	3408247171	CAP RSA 470UF 50V SNAP 13 P	470/50	3
C105 C207 C303 C401	3409247261	CAP AF HC 4700UF 35V 22 P LUG	4700/35	4
FUZE	4458999210	FAU-0031.3577 SCHURTER PU-3210	1A/250V	1
	4458999210	FAU-0031.3577 SCHURTER PU-3210	3A/250V	
	4458999210	FAU-0031.3577 SCHURTER PU-3210	4A/250V	
IC401	2128610900	IC KA7815 COMMON	7815	1
IC301	2128611206	IC 7805 G.S	GS7815	1
	7505299310	HEAT SINK(30MM) REG TR	35MM	
IC101A IC201A	2168609989	IC NJM723D	LM723	2
LD101	2300050101	LED LTL-307E-012A	RED	1
LD102	2300052105	LED LTL-307G-041A LITEON	RED	1
LD103	2300050105	LED LTL-307E-041A LITEON	RED	1
LD104	2300050100	LED LTL-307E LITEON	RED	1
CN201	4355894518	CON ASS'Y 2P	MOLEX2P	1
CN112	4428595002	LW5267/LWB0640/2.5MM-02P	MOLEX2P	1
R301-302 R401-402	3059338582	RES CE 0.33 2W J N	0.33 2W	4

R603	3009104973	RES CF 100K 1/5W J N	100K	1
R503	3009100973	RES CF 10 1/5W J N	10	1
R34-35	3039100572-F	RES MO 10 2W J N	10 2W	2
R109 R111 R211	3002100953	RES CF 10K 1/5W F N	10K 1%	3
R102 R202	3009181973	RES CF 180 1/5W J N	180	2
R513	3009183973	RES CF 18K 1/5W J N	18K	1
R512	3009109973	RES CF 1 1/5W J N	1	1
R113 R504 R506	3009102973	RES CF 1K 1/5W J N	1K	3
R106 R206	3009105973	RES CF 1M 1/5W J N	1M	2
R509 R511	3009222973	RES CF 2.2K 1/5W J N	2.2K	2
R103 R203	3009221973	RES CF 220 1/5W J N	220	2
R107 R207	3009220973	RES CF 22 1/5W J N	22	2
R515	3009223973	RES CF 22K 1/5W J N	22K	1
R209	3009332973	RES CF 3.3K 1/5W J N	3.3K	1
R101 R201	3009331973	RES CF 330 1/5W J N	330	2
R110 R112 R212	3003470953	RES CF 4.7K 1/5W F N	4.7K 1%	3
R604 R701 R703	3009472973	RES CF 4.7K 1/5W J N	4.7K	3
R210	3009470973	RES CF 47 1/5W J N	47	1
R214 R514	3009562973	RES CF 5.6K 1/5W J N	5.6K	2
R507	3009563973	RES CF 56K 1/5W J N	56K	1
R501 R508 R510 R601-602 R702	3009682973	RES CF 6.8K 1/5W J N	6.8K	6
R502 R505	3009683973	RES CF 68K 1/5W J N	68K	2
R108 R208	3009820973	RES CF 82 1/5W J N	82	2
R213	3003940953	RES CF 9.4K 1/5W F N	9.4K 1%	1
RLY1-3	5528009950	RELAY HR-CR3A23 DC 24VH	CR323	3
SW101	4628988610	SW POWER SDDF3PATL011 (SP278)	POWER	1
Q501 Q504	2008606100-T	KTC-200-Y-AT	KTC 200Y	2
Q601-603	2008606104-T	TR NPN KTC3198-Y-AT TO-92	KTC 3198Y	3
Q202	2028406113	KTD2058-Y-U	KTD 2058Y	1
Q503	2028406113 7505299320	KTD2058-Y-U HEAT SINK(45MM) REG TR	KTD 2058Y 45MM	1
Q101 Q201 Q301	2028107118	TR PNP 2SA1943 TOSHIBA	2SA 1302	3
Q401	2028107115 7505299320	KTA968A-Y-U HEAT SINK(45MM) REG TR	2SA 968Y 45MM	1
Q302 Q402 Q502	2008206999-T	KTA200-Y-AT	A200Y	3
VR201 VR501	3248322220	RES SEMI RH0615C100222	222B	2
ZD502	2058512140	DIODE ZENER 6.2V 1W(IN4735A)	6.2V 1W	1
ZD501	2058100988	DIODE BRIDGE PBU 804	PBU804	1
ZD601	2058502240	DIODE ZENER UZ-24BM(1N5252B)	UZ 24BM	1
ZD101 ZD201	2058502091	DIODE ZENER UZ-9.1B(1N5239B)	UZ 9.1BM	2
GND	4235007210 4465100110	GND TERMINAL (POWER B'D) GND TERMINAL	GND	1
CORD	4308999710	CORD AC DOME 3 CORES	CORD	1
ASS'Y				
CABLE	4355894910	POWER CABLE 12P RS-3200		1
DIODE	2058100103	DIODE KBPC-2504 LUG TYPE		3
AC CORD	4308994110	AC CORD ASSY		1

	4308991210	AC CORD EL-210/ENDCUT(UK)	C	1
	4308994020	AC CORD ASS'Y (SAA)	D	1
	4308999710	CORD AC DOME 3 CORES		1
	4308994920	AC CORD ASS'Y 250T	C , R	2
	4308994910	AC CORD (EUROPE 3 CORES)	R	1
	4308999210	AC UP502+OCSA0.75MM2X3C200MM	D	1
	4308996110	AC CORD 250T ASS'Y (UL/CSA)	E	1
	4308990610	AC CORD ASS'Y JIS (CMX-2464)	J	1
	4308990710	AC POWER CORD (END CUT) JIS	J	1
STOPPER CORD	6513000210	STOPPER CORD 3-CORES		1
TERMINAL	4355894710	POWER TERMINAL (RS-3200)		1
PT	2828080600	POWER TRANS (REPOWER) RS-3200		1
	2828080610	POWER TRANSFORMER(RS3200 120	E	1
	2828058400	TRANS POWER RS-3200 100V	J	1
TG	4408104910	TERMINAL GND(M4)GT-2190C		1
FUSE	4458999410	FUSE CARRIER FEU0031.1663 SUT		4
	4458999410	FUSE CARRIER FEU0031.1663 SUT	E	3
	5508412729	FUSE#218T 20MM 2A/250V UCSKJ		1
	5508413038	FUSE#218T20MM 3.15A/250V UCSKJ		1
	4458999310	FUSE CARRIER FEK-0031.1661 SUT	E , J	2
	5508413339	FUSE#218T 20MM 5A/250V UCSKJ		1
	5508223433	FUSE NB 31.8MM 6A/250V U/C	E	1
	5508223637	FUSE NB 31.8MM 7A/250V / J	J	1
	5508411039	FUSE#218T 20MM 160MA/250V UCS	J	1
	5508412839	FUSE#218T 20MM 2.5A/250V UCSKJ	J	1
	5508113439	FUSE#21GT T20MM 6A/250V UCK	J	1
	5508113237	FUSE 53S 20MM 4A/250V K/U/C/J	J	1
CON	4355894312	CON ASS'Y 4P		1
	4355894418	CON ASS'Y 1P		1
	4355894210	CON ASS'Y 2P		4
SW	4835002710	INSULATION POWER SWITCH	J	1