

SERVICE

MANUAL

S T E R E O P O W E R E D

MIXER

PC-1235/1650

interM

ELECTRICAL PARTS LIST (PC-1235/1650)

Ref No.	Part No.	Description	Value	Qty
---------	----------	-------------	-------	-----

AMP B'D (400349500)

C815	3509102530-T	CAP CE B 0.001UF 50V J	0.001/50	1
C215	3509103530-T	CAP CE F 0.01UF 50V Z(PC-1235)	0.01/50	1
	3509101130-T	CAP CE SL 100PF 50V J(PC-1650)	100P	1
C207	3678220177	CAP M1 DM 10C 220J5	220J	1
C202	3688471118	CAP MO SR22C 471JA	471J	1
C208	3678050177	CAP M1 DM10C 050D5	050D	1
CN201	4428595002	LW5267/LWB0640/2.5MM-02P	MOLEX 5267-2P	1
CON203	4428596604	LOCK WAFER LW-1143-04P	CON4P	1
CN204	4428596604	LOCK WAFER LW-1143-04P	CON4P	1
CN202	4355826625	CON ASS'Y 7P	CON7P	1
L201	2648099940	COIL INDUCTOR 1.2UH	1.2uH	1
D201-209	2058304100	DIODE IN4148M	1N 4148	9
D210-211	2058322100	DIODE 1SS145 ROHM	ISS 142	2
D212-213	2058100110	DIODE RL207 PYUNG CHANG	RL207	2
C206	3409810141-T	CAP AF NP 100UF 25V	100/25 NP	1
C211-212	3409247991-T	CAP AF RSG 4.7UF 100V 5 P	4.7/100	2
C201	3409547031-T	CAP AF 47UF 16V (MOSE)	47/16	1
C205	3698152198	CAP NPP POLY 152J 2J	0.0015/500V	1
C209-210	3609222120-T	CAP MA 0.0022UF 100V J	0.0022/100(M)	2
C203-204 C213-214	3609104122-T	CAP MA 0.1UF 100V J SMALL	0.1/100(M)	4
R236-237 R242-243	3049478783	RES CE 0.47 5W J T HAN NAE(PC-1235)	0.47 5W	4
R236-237 R242-243 R248-249 R265-266 R271-272	3049478783	RES CE 0.47 5W J T HAN NAE(PC-1650)	0.47 5W	10
R203	3009132973	RES CF 1.3K 1/5W J N(PC-1235)	1.3K	1
	3009102973	RES CF 1K 1/5W J N(PC-1650)	1K	1
R216	3009182973	RES CF 1.8K 1/5W J N	1.8K	1
R213	3009101973	RES CF 100 1/5W J N	100	1
R234-235 R240-241	3079101275	RES ERD-2FCVG 101T 1/4W R(PC-1235)	100 1/4W	4
R234-235 R240-241 R246-247 R263-264 R269-270	3079101275	RES ERD-2FCVG 101T 1/4W R(PC-1650)	100 1/4W	10
R252-253	3009104973	RES CF 100K 1/5W J N	100K	2
R251	3059100772	RES CE 10 5W JN	10 5W	1
R207	3009121973	RES CF 120 1/5W J N(PC-1235)	120	1
	3009221973	RES CF 220 1/5W J N(PC-1650)	220	1
R205	3009123973	RES CF 12K 1/5W J N	12K	1
R254	3009184973	RES CF 180K 1/5W J N	180K	1
R206	3009102973	RES CF 1K 1/5W J N	1K	1
R222-223 R226-229	3089221275	RES NFR 220 1/4W J R PHILKO	220 1/4W	6
R258	3009224973	RES CF 220K 1/5W J N	220K	1
R218-219	3002220953	RES CF 22K 1/5W F N	22K 1%	2
R255-256	3009223973	RES CF 22K 1/5W J N	22K	2
R201	3009271973	RES CF 270 1/5W J N	270	1
R230-231	3089332275	RES NFR 3.3K 1/4W J R PHILKO	3.3K 1/4W	2
R232-233 R238-239	3089479275	RES NFR 4.7 1/4W J R PHILKO(PC-1235)	4.7 1/4W	4

R232-233 R238-239 R244-245 R261-262 R267-268	3089479275	RES NFR 4.7 1/4W J R PHILKO(PC-1650)	4.7 1/4W	10
R250	3039479575-T	RES MO 4.7 2W J RADIAL	4.7 2W	1
R217	3009471973	RES CF 470 1/5W J N	470	1
R202 R210-212 R224-225	3009473973	RES CF 47K 1/5W J N(PC-1235)	47K	6
R210-212	3009683973	RES CF 68K 1/5W J N(PC-1650)	68K	3
R224-225	3009393973	RES CF 39K 1/5W J N(PC-1650)	39KK	2
R204 R208-209	3009561973	RES CF 560 1/5W J N	560	3
R257	3009683973	RES CF 68K 1/5W J N	68K	1
R214-215	3089820275	RES NFR 82 1/4W J R PHILKO	82 1/4W	2
RY201	5528006600	RELAY 833H-1C-C24V(SONGCHUAN)	HR702H	1
R220-221	3089100275	RES NFR 10 1/4W J R PHILKO	10 1/4W	2
PO201	2438007994	POSISTOR PTFLO4BE471Q2N34B0	BE471TS	1
PO202	2438007993	POSISTOR PTFM04BE222Q2N34B0	BE471TS	1
PO203	2438007995	POSISTOR PTFM04BH471Q2N34B0	BH471TS	1
Q207	2008405999	TR NPN 2SC4001 NEC	2SC 4001	1
Q213 Q215	2028407122	TR NPN 2SC5200 TOSHIBA(PC-1235)	2SC3281	2
Q213 Q215 Q217 Q219 Q221	2028427998	TR 2SC 3856 W/ACC(PC-1650)	2SC 3856	5
Q208 Q211	2028407990	KTC4370A-Y-U	C4370	2
Q204-205 Q209	2008606108-T	KTC3200-BL-AT	C3200BL	3
Q206	2008005999	TR PNP 2SA 1546 NEC	2SA 1546	1
Q214 Q216	2028107118	TR PNP 2SA1943 TOSHIBA(PC-1235)	2SA1943	2
Q214 Q216 Q218 Q220 Q222	2028117994	TR PNP 2SA 1492 W/ACC(PC-1650)	2SA 1492	5
Q212	2028107984	KTA1659A-Y-U	A1659	1
Q201 Q210	2008206104-T	KTA1268-BL-AT	KTA 1268BL	2
Q202-203	2008606105-T 2008206106-T	TR NPN KTA1266-Y-AT TO-92(PC-1235) KTA2400-GR-AT(PC-1650)	A1266 A2400	2 2
VR201	3248347120-T	RES SEMI RH063MCS2R	470B	1
GND	4235007210	GND TERMINAL (POWER B'D)	GND	1
HEAT SINK	7502089910 7502089920	HEAT SINK (L=320) PC-1235 HEAT SINK (L=2500) PC-1650	HEAT SINK HEAT SINK	1 1
SPACER	6705998410 6705998510	SPACER HOLDER SPACER PS-A152	SPACER SPACER	3 3
WASHER	8329030011	WASHER THD/IN 3 Y	WASHER	1
BRACKET	6503983020 6503983010	BRACKET TR P-1500(PC-1235) BRACKET TR P-3500(PC-1650)	BRACKET BRACKET	2 2

DSP B'D (4003486800)

IC3	2128310600 4448000097	IC EPROM 27C512 ART LONG DELAY SOCKET IC ZT-28-A(28PIN)	27512 28P	1 1
C15-18 C28-29 C31	3509103530-T	CAP CE F 0.01UF 50V Z	0.01/50	7
C7-8 C12 C21-22 C24-25	3509104530-T	CAP CE F 0.1UF 50V Z	0.1/50	7
C30	3509331130-T	CAP CE SL 330PF 50V J	330P	1
C3-4	3509330130-T	CAP CE SL 33PF 50V J	33P	2
C51 C54	3539473531-A	CAP CE F 47000PF 50V Z AXIAL	47000P	2
CN206	4428595003	LW5267/LWB0640/2.5MM-03P	CON3P	1

CN3 CN205	4428595002	LW5267/LWB0640/2.5MM-02P	CON2P	2
CN201 CN203 CN207-208 CN210 CN212	4428595004	LW5267/LWB0640/2.5MM-04P	CON4P	6
CN204 CN209 CN211	4428595005	LW5267/LWB0640/2.5MM-05P	CON5P	3
CN213	4428595006	LW5267/LWB0640/2.5MM-06P	CON6P	1
CN202	4428595008	LW5267/LWB0640/2.5MM-08P	CON8P	1
L1	2648699890	COIL INDUCTOR 100UH	100mH	1
X1	3908101070	CRYSTAL 16.000MHZ 49/U 30PF	16MHz	1
D51	2058100996	DIODE RECTIFIER LT1N4006(4007)	1N 4006	1
CR1-2	2058304100	DIODE IN4148M	1N 4148	2
C1	3409210971-T	CAP AF RSG 1UF 50V 5 P	1/50	1
C11	3409210071-T	CAP AF RSG 10UF 50V 5 P	10/50	1
C53	3409210141-T	CAP AF RSG 100UF 25V 6 P	100/25	1
C23	3409210112-T	CAP AF RSS 100UF 6.3V 6 P	100/6.3	1
C6 C9-10	3409222044-T	CAP RG 22UF 25V 105C	22/25	3
C19-20	3409222071-T	CAP AF RSG 22UF 50V 5 P	22/50	2
C52	3409222141-T	CAP AF RSG 220UF 25V J 8 P	220/25	1
C2 C13-14	3409247971-T	CAP AF RSG 4.7UF 50V 5 P	4.7/50	3
C26-27	3409247041-T	CAP AF RSG 47UF 25V 5 P	47/25	2
IC5	2128514056	IC HD74HC30BP HT	74HC30	1
IC2	2128310500	IC EPROM 27C512 DIP ART DSP	ART FX DSP2	1
	4448062284	SOCKET IC 84P	84P	1
IC6	2128860000	IC CS4218-KL CRYSTAL	CS4218	1
	4448062244	SOCKET IC 44P	44P	1
IC51	2128611206	IC 7805 G.S	7805G.S	1
IC1	2128420400	IC KM62256 DLP-7L SAMSUNG(PC-1235)	128K*8	1
	2128401300	SRAM K6T 1008C2E-DB70000 32DIP(PC-1650)	32P	1
IC4	2128514057	IC HD74HC374BP HT	74HC374	1
IC7	2118010432	IC NJM2068DD JRC	NJM 2068DD	1
R8 R22-23	3009104973	RES CF 100K 1/5W J N	100K	3
R17	3009100973	RES CF 10 1/5W J N	10	1
R1-3 R6-7 R11 R14-15 R30-37	3009103973	RES CF 10K 1/5W J N	10K	16
R5 R9 R12-13 R24-25	3009102973	RES CF 1K 1/5W J N	1K	6
R18 R38-45	3009332973	RES CF 3.3K 1/5W J N	3.3K	9
R19 R46-49	3009472973	RES CF 4.7K 1/5W J N	4.7K	5
R10 R20-21	3009474973	RES CF 470K 1/5W J N	470K	3
R16 R26-27	3009511973	RES CF 510 1/5W JN	510	3
R28-29	3009751973	RES CF 750 1/5W	750	2
Q1-4	2008606108-T	KTC3200-BL-AT	C3200BL	4

STEREO INPUT B'D (4003495600)

C240-250	3539103521-A	CAP CE YF 10000PF 25V Z AXIAL	10000P	11
C201-202 C207-210 C227-228 C233-236	3509101231-A	CAP CE B 100PF 50V K AXIAL	100P	12
C205-206	3509221231-A	CAP CE B 220PF 50V K AXIAL	220P	2
C221-222	3529220211-A	CAP CE CH 22PF 50V J AXIAL	22P	2
C211-212	3529470311-A	CAP CE SL 47PF 50V J AXIAL	47P	2
CN203	4428594902	LA5268/LAB0640/2.5MM-02P	2P	1
CN202	4428592810	WAFER BOX 10P TPHAB03-1419-10A	CON10P	1

CN201	4428592514	WAFER BOX PIN (14P) PC-1635	CON14P	1
CN204	4428594905	LA5268/LAB0640/2.5MM-05P	5P	1
D201-202	2058304100	DIODE IN4148M	1N 4148	2
C203-204 C213-214 C229-232 C237-238	3409222071-T	CAP AF RSG 22UF 50V 5 P	22/50	10
JK201-202	4438097310	JACK PHONE 4P	JACK4P	2
LD201	2300030105	LED LTL-1CHE-021A LITEON	RED	1
C219-220	3609102120-T	CAP MA 0.001UF 100V	0.001/100(M)	2
C223-224	3609222120-T	CAP MA 0.0022UF 100V J	0.0022/100(M)	2
C225-226	3609562120-T	CAP MA 0.0056UF 100V	0.0056/100(M)	2
C215-218	3609393120-T	CAP MA 0.039UF 100V J	0.039/100(M)	4
C239	3609473120-T	CAP MA 0.047UF 100V	0.047/100(M)	1
IC201-202	2118010432	IC NJM2068DD JRC	NJM 2068DD	2
IC203-205	2118010590	IC NJM4558D JRC	NJM 4558D	3
R201-202	3009101973	RES CF 100 1/5W J N	100	2
R205-208 R213-214 R219-220 R223-226 R235-238	3009103973	RES CF 10K 1/5W J N	10K	16
R203-204	3009153973	RES CF 15K 1/5W J N	15K	2
R252-253	3009104973	RES CF 100K 1/5W J N	100K	2
R227-230 R239-240	3009183973	RES CF 18K 1/5W J N	18K	6
R251	3009105973	RES CF 1M 1/5W J N	1M	1
R231-234	3009223973	RES CF 22K 1/5W J N	22K	4
R209-210	3009202973	RES CF 2K 1/5W J N	2K	2
R217-218	3009333973	RES CF 33K 1/5W J N	33K	2
R241-248	3009363973	RES CF 36K 1/5W J N	36K	8
R211-212	3009391973	RES CF 390 1/5W J N	390	2
R215-216 R249-250	3009472973	RES CF 4.7K 1/5W J N	4.7K	4
R221-222	3009562973	RES CF 5.6K 1/5W J N	5.6K	2
Q201	2008613000-T	TR NPN 2SD1111 (SANYO,NEC)	2SD 1111	1
VR201	3238087510	VR EVJC50F02 D24 20KD*2	20KD*2	1
VR202-204	3238088210	VR EVJ C51 F02 B54 50KB*2	50KB(C.C)*2	3
VR205	3238081310	VR SLIDE 10KA*2 ALPHA	10KA*2	1
VR206-209	3238088410	VR EVJ C50 F02 A24 20KA*2	20KA*2	4
VR210	3238088510	VR EVJ CC1 F02 705 20KAC*2	20KAC*2	1
BLK1-2	6505949110	BRACKET PHONE JACK A"	JACK A"	2

LED B'D (4003495540)

C1 C705	3639274111-T	CAP ECQ-V 1H274JL2 0.27UF 50V	0.27M	2
C72 C709	3609563120-T	CAP MA 0.056UF 100V	0.056M	2
C708 C65	3639184111-T	CAP ECQ-V 1H184JL2 0.18UF 50V	0.18M	2
C719-736	3529103531-A	CAP CE F 10000PF 50V Z	10000P	18
C77 C703	3509151231-A	CAP CE B 150PF 50V K AXIAL	150P	2
AN702	4355824303	CON ASS'Y 2P	2P(100mm)	1
AN701	4355824201	CON ASS'Y 4P	4P(80mm)	1
AN705	4355824407	CON ASS'Y 4P	4P	1
AN703	4355713709	CON ASS'Y 5P	AN5P	1
AN704	4355713711	CON ASS'Y 5P	5P	1
C78 C704	3409210141-T	CAP AF RSG 100UF 25V 6 P	100/25	2
C79-80 C701-702	3409222141-T	CAP AF RSG 220UF 25V J 8 P	220/25	4
SW701-702	4608001200	SW ROTARY EN-SPE-288S0327 CTS	ENCODER	2

C70 C718	3609102120-T	CAP MA 0.001UF 100V	0.001/100(M)	2
C76 C717	3609182120-T	CAP MA 0.0018UF 100V J	0.0018/100(M)	2
C69 C716	3609332120-T	CAP MA 0.0033UF 100V	0.0033/100(M)	2
C75 C715	3609392120-T	CAP MA 0.0039UF 100V J	0.0039/100(M)	2
C68 C74 C713-714	3609822120-T	CAP MA 0.0082UF 100V	0.0082/100(M)	4
C67 C73 C711-712	3609183120-T	CAP MA 0.018UF 100V	0.018/100(M)	4
C66 C710	3609473120-T	CAP MA 0.047UF 100V	0.047/100(M)	2
C71 C707	3639124111-T	CAP ECQ-V 1H124JL2 0.12UF 50V	0.12M	2
C63 C706	3639334111-T	CAP ECQ-V 1H334JL2 0.33UF 50V	0.33M	2
IC701-709	2118010590	IC NJM4558D JRC	NJM 4558D	9
R88 R711	3009122973	RES CF 1.2K 1/5W J N	1.2K	2
R91 R102-103 R701 R706	3009104973	RES CF 100K 1/5W J N	100K	5
R98-99 R703-704	3009103973	RES CF 10K 1/5W J N	10K	4
R84 R86 R90 R92 R94 R96 R707 R709 R713 R715 R717 R719	3009102973	RES CF 1K 1/5W J N	1K	12
R100 R705	3009220973	RES CF 22 1/5W J N	22	2
R101 R702	3009474973	RES CF 470K 1/5W J N	470K	2
R87 R89 R95 R97 R710 R712 R718 R720	3009473973	RES CF 47K 1/5W J N	47K	8
R93 R716	3009563973	RES CF 56K 1/5W J N	56K	2
R85 R708 R714	3009683973	RES CF 68K 1/5W J N	68K	3
VR701-714	3238010411	VR RS20111C600314W	100KW	14
C509	3539473531-A	CAP CE F 47000PF 50V Z AXIAL	4700P	1
AN501	4355824103	CON ASS'Y 2P	AN2P	1
CN1004 CN1006	4428594902	LA5268/LAB0640/2.5MM-02P	CON2P	2
CN1001	4428594903	LA5268/LAB0640/2.5MM-03P	AN3P	1
AN1009	4355824815	CON ASS'Y 3P	AN3P	1
AN502	4355823912	CON ASS'Y 4P	AN4P	1
AN503	4355824009	CON ASS'Y 4P	AN4P	1
AN1008	4355824606	CON ASS'Y 4P	AN4P	1
AN1010	4355824918	CON ASS'Y 4P	AN4P	1
AN1011	4355824728	CON ASS'Y 4P	AN4P	1
CN1002 CN1005	4428594904	LA5268/LAB0640/2.5MM-04P	CON4P	2
CN1003	4428594905	LA5268/LAB0640/2.5MM-05P	CON5P	1
C501-508 C510	3409247971-T	CAP AF RSG 4.7UF 50V 5 P	4.7/50	9
IC505	2128514052	IC HD74HC154P ()	74HC154P	1
IC501 IC503	2118030405	KIA6966S	6966	2
IC502 IC504	2118040105	KIA6967S	6967	2
LD501-507 LD511-517 LD538	2300032105	LED LTL-1CHG-021A LITEON	GREEN	15
LD510 LD520 LD537	2300030105	LED LTL-1CHE-021A LITEON	RED	3
LD519 LD508 LD521-536 LD518 LD509	2300031105	LED LTL-1CHY-021A LITEON	YELLOW	20
R516	3009182973	RES CF 1.8K 1/5W J N	1.8K	1
R1003-1004	3009104973	RES CF 100K 1/5W J N	100K	2
R1005-1008	3009100973	RES CF 10 1/5W J N	10	4
R515	3009151973	RES CF 150 1/5W J N	150	1
R501 R508	3009153973	RES CF 15K 1/5W J N	15K	2

R502 R509	3009203973	RES CF 20K 1/5W J N	20K	2
R517	3009332973	RES CF 3.3K 1/5W J N	3.3K	1
R504 R507 R511 R514 R1001-1002	3009331973	RES CF 330 1/5W J N	330	6
R505 R513	3009473973	RES CF 47K 1/5W J N	47K	2
R506 R512	3009563973	RES CF 56K 1/5W J N	56K	2
R112 R510	3009823973	RES CF 82K 1/5W J N	82K	2
SW1001-1003	4628992410	SW PUSH SPUN19X1M011	TAPE IN	3
ZD501	2058502240	DIODE ZENER UZ-24BM(1N5252B)	UZ 24BM	1

ST OUT B'D (4003495500)

C307-308 C313-314 C316-317 C407-408 C413-414 C416-417 C608-609 C612	3529103531-A	CAP CE F 10000PF 50V Z	10000P	15
C304-305 C310-311 C404-405 C410-411 C603 C606-607	3509101231-A	CAP CE B 100PF 50V K AXIAL	100P	11
C302 C402 C602	3509221231-A	CAP CE B 220PF 50V K AXIAL	220P	3
C303 C403	3529470311-A	CAP CE SL 47PF 50V J AXIAL	47P	2
AN1007	4355827319	CON ASS'Y 2P	AN2P	1
AN301	4355823807	CON ASS'Y 3P	AN3P	1
AN1004	4355827110	CON ASS'Y 8P	AN8P	1
CN301 CN401 CN601	4428592810	WAFER BOX 10P TPHAB03-1419-10A	CN10P	3
CN302 CN402	4428594902	LA5268/LAB0640/2.5MM-02P	CN2P	2
AN1005	4355827216	CON ASS'Y 3P	AN3P	1
CN303 CN403 CN602	4428594903	LA5268/LAB0640/2.5MM-03P	CN3P	3
AN1006	4355827010	CON ASS'Y 8P	CON8P	1
C306 C309 C406 C409 C604-605	3409222071-T	CAP AF RSG 22UF 50V 5 P	22/50	6
C301 C401 C601 C610	3409222141-T	CAP AF RSG 220UF 25V J 8 P	220/25	4
C312 C412	3409247071-T	CAP AF RSG 47UF 50V 6 P	47/50	2
JK1010-1014	438192910	PHONE JACK (5P) METAL	JACK5P	5
IC301 IC401	2118010432	IC NJM2068DD JRC	NJM 2068DD	2
IC302 IC402 IC601	2118220988	IC NJM 4580D	NJM 4580D	3
R310 R410 R608	3009104973	RES CF 100K 1/5W J N	100K	3
R1009-1011 R1013	3009100973	RES CF 10 1/5W J N	10	4
R302-303 R308 R402-403 R408	3009103973	RES CF 10K 1/5W J N	10K	6
R606	3009113973	RES CF 11K 1/5W J N	11K	1
R307 R407 R605	3009153973	RES CF 15K 1/5W J N	15K	3
R601	3009183973	RES CF 18K 1/5W J N	18K	1
R301 R401	3009243973	RES CF 24K 1/5W JN CDC-9300	24K	2
R309 R409	3009331973	RES CF 330 1/5W J N	330	2
R311 R411	3009363973	RES CF 36K 1/5W J N	36K	2
R304 R306 R404 R406 R602 R604	3009473973	RES CF 47K 1/5W J N	47K	6
R607	3009750973	RES CF 75 1/5W JN	75	1
R305 R405 R603			100	3
SW301	3238098310	SW SLIDE SS90020-0202-6T-NN	SW SLIDE	1
VR301 VR401 VR601	3238098010	VR RS60E1224T0113A	10KA	3

MONO INPUT B'D (4003495700)

C123-124 C134-135 C177	3529103531-A	CAP CE F 10000PF 50V Z	10000P	5
C107-108	3509102231-A	CAP CE YB 1000PF 50V K AXIAL	1000P	2
C125 C128 C131-132 C137-138	3509101231-A	CAP CE B 100PF 50V K AXIAL	100P	6
C112	3509151231-A	CAP CE B 150PF 50V K AXIAL	150P	1
C109-110	3509221231-A	CAP CE B 220PF 50V K AXIAL	220P	2
C122	3529220211-A	CAP CE CH 22PF 50V J AXIAL	22P	1
C103-104	3509271231-A	CAP CE B 270PF 50V K AXIAL	270P	2
C113-114 C121	3529470311-A	CAP CE SL 47PF 50V J AXIAL	47P	3
D101-103	2058304100	DIODE IN4148M	1N 4148	3
C105-106	3409210141-T	CAP AF RSG 100UF 25V 6 P	100/25	2
C111	3409210221-T	CAP AF RSG 1000UF 6.3V 10 P	1000/6.3	1
C143	3409222971-T	CAP AF RSG 2.2UF 50V 5 P	2.2/50	1
C115 C129-130 C133 C139-140	3409222071-T	CAP AF RSG 22UF 50V 5 P	22/50	6
C101-102 C142	3409247081-T	CAP AF SG 47UF 63V 8 P	47/63	3
PJ101-102	4438097310	JACK PHONE 4P	JACK4P	2
XLR101	4438193710	XLR JACK(F) 3P(E303A0070N)	MIC	1
LD101	2300030105	LED LTL-1CHE-021A LITEON	RED3	1
C120	3609102120-T	CAP MA 0.001UF 100V	0.001(M)	1
C126	3609392120-T	CAP MA 0.0039UF 100V J	0.0039/100(M)	1
C127	3609103120-T	CAP MA 0.01UF 100V	0.01/100(M)	1
C118-119	3609333120-T	CAP MA 0.033UF 100V J	0.033/100(M)	2
C141	3609473120-T	CAP MA 0.047UF 100V	0.047/100(M)	1
IC101	2118010432	IC NJM2068DD JRC	NJM 2068DD	1
IC102	2118010590	IC NJM4558D JRC	NJM 4558D	1
R153	3009182973	RES CF 1.8K 1/5W J N	1.8K	1
R121	3009101973	RES CF 100 1/5W J N	100	1
R139	3009104973	RES CF 100K 1/5W J N	100K	1
R106-107 R110-111 R133	3009100973	RES CF 10 1/5W J N	10	5
R122 R125 R127 R130 R136-137	3009103973	RES CF 10K 1/5W J N	10K	6
R103-104	3009153973	RES CF 15K 1/5W J N	15K	2
R152	3009184973	RES CF 180K 1/5W J N	180K	1
R140-145	3009183973	RES CF 18K 1/5W J N	18K	6
R151	3009105973	RES CF 1M 1/5W J N	1M	1
R117-118	3003220953	RES CF 2.2K 1/5W F N	2.2K 1%	2
R150	3009222973	RES CF 2.2K 1/5W J N	2.2K	1
R131	3009224973	RES CF 220K 1/5W J N	220K	1
R138	3009220973	RES CF 22 1/5W J N	22	1
R134-135	3009223973	RES CF 22K 1/5W J N	22K	2
R119-120	3002270953	RES CF 27K 1/5W FN	27K 1%	2
R124	3009333973	RES CF 33K 1/5W J N	33K	1
R123 R128-129	3009472973	RES CF 4.7K 1/5W J N	4.7K	3
R114	3005430953	RES CF 43 1/5W FN	43	1
FR101	3089470275	RES NFR 47 1/4W JR PHILKO	FR 47	1
R108-109 R146 R148	3009473973	RES CF 47K 1/5W J N	47K	4

R126	3009562973	RES CF 5.6K 1/5W J N	5.6K	1
R132	3009561973	RES CF 560 1/5W J N	560	1
R101-102	3003680953	RES CF 6.8K 1/5W F N	6.8K 1%	2
R105	3009682973	RES CF 6.8K 1/5W J N	6.8K	1
R115-116	3009681973	RES CF 680 1/5W J N	680	2
R147 R149	3009752973	RES CF 7.5K 1/5W J N	7.5K	2
R112-113	3003820953	RES CF 8.2K 1/5W FN	8.2K 1%	2
Q105	2008613000-T	TR NPN 2SD1111 (SANYO,NEC)	2SD 1111	1
Q103-104	2008606108-T	KTC3200-BL-AT	C3200BL	2
Q101-102	2008206106-T	KTA2400-GR-AT	KTA 2400G	2
VR101	3238087310	VR EVU JE9FK 424Y 20K	20K	1
VR102 VR104-105	3238088710	VR EVU E3J FK4 B54 50KB	50KB(C.C)	3
VR103	3238088810	VR EVJ C50 F02 C15 100KC*2	100KC*2	1
VR106-109	3238088610	VR EVU E2J FK4 A24 20KA	20KA	4
VR110	3238088510	VR EVJ CC1 F02 705 20KAC*2	20KAC*2	1
VR111	3238081810	VR RA6040-30-15D1-A14-008	10KA(FADER)	1
CN101	4428592514	WAFER BOX PIN (14P) PC-1635	14P	1
BKT	6505955410	BRACKET PHONE JACK 'A'	BKT	1

POWER B'D (4003495200)

T801-804 T807	4465998210	TERMINAL(250)PCB TAB	250T	5
D814	2058100987	DIODE BRIDGE (KPBP) 152	KPBP 152	1
D801	2058100981	DIODE BRIDGE KBU402 PBU402	PBU 402	1
C1-4 C7	3409710070-T	CAP AF NP 10UF 50V 6 P	10/25 NP	5
C857-858	3549472407	CAP DE2E3KH472MA4B	0.0047/400V	2
C822	3509103530-T	CAP CE F 0.01UF 50V Z	0.01/50	1
C824 C831 C833 C835-839 C848-849 C852-853	3539103521-A	CAP CE YF 10000PF 25V Z AXIAL	10000P	12
C801-804 C816-819 C826-829	3509103450-T	CAP CE 0.01UF 500V Z	0.01/500	12
CN806-807	4428595002	LW5267/LWB0640/2.5MM-02P	CON2P	2
CN803	4428595004	LW5267/LWB0640/2.5MM-04P	CON4P	1
CN808-809	4428595007	LW5267/LWB0640/2.5MM-07P	CON7P	2
CN802	4428595008	LW5267/LWB0640/2.5MM-08P	CON8P	1
EM801-802	3908609980	EMI FILTER 2200PF	2200P	2
D802-807 D810-813 D815-817	2058100996	DIODE RECTIFIER LT1N4006(4007)	1N 4006	13
D808-809	2058304100	DIODE IN4148M	1N 4148	2
C809-810 C813-814	3529103531-A	CAP CE F 10000PF 50V Z	10000P	4
C841	3409210071-T	CAP AF RSG 10UF 50V 5 P	10/50	1
C843	3408210191	CAP RSA 100UF 100V SNAP 13 P	100/100	1
C842 C847	3409210141-T	CAP AF RSG 100UF 25V 6 P	100/25	2
C825	3409210181-T	CAP AF RSG 100UF 63V	100/63	1
C840	3408210241	CAP RSA 1000UF 25V SNAP 13 P	1000/25	1
C820	3409210208	CAP HM 1000UF 80V 20X25	1000/80	1
C850 C856	3419510398	CAP AF HM 10000UF 100V 40P LUG	10000/100	2
C823	3409222081-T	CAP AF RSG 22UF 63V 6 P	22/63	1
C811-812 C815	3409222141-T	CAP AF RSG 220UF 25V J 8 P	220/25	3
C844	3409222171-T	CAP AF RSG 220UF 50V SG 10 P	220/50	1
C830	3408222241	CAP RSA 2200UF 25V SNAP 16 P	2200/25	1

C805-806	3409233071-T	CAP AF RSG 33UF 50V 6 P	33/50	2
C821	3419547091-T	CAP E SG 47UF/100V 10 P	47/100	1
C834-846	3409247131-T	CAP AF SG 470UF 16V 10X12.5	470/16	3
C807-808	3409247261	CAP AF HC 4700UF 35V 22 P LUG	4700/35	2
IC801	2168640988	IC 7815 SAMSUNG	7815	1
IC802	2168640987	IC 7915 SAMSUNG	7915	1
IC803	2128611206	IC 7805 G.S	7805	1
R809 R811 R819	3039122572-F	RES MO 1.2K 2W J	1.2K 2W	3
R816	3009104973	RES CF 100K 1/5W J N	100K	1
FR801-802	3089100275	RES NFR 10 1/4W J R PHILKO	FR 10	2
R802-803	3009103973	RES CF 10K 1/5W J N	10K	2
R808	3009123973	RES CF 12K 1/5W J N	12K	1
R805 R807	3009221973	RES CF 220 1/5W J N	220	2
R801 R804 R813-814	3009223973	RES CF 22K 1/5W J N	22K	4
R810 R818	3009681973	RES CF 680 1/5W J N	680	2
R812 R815 R817	3009822973	RES CF 8.2K 1/5W J N	8.2K	3
R806	3009333973	RES CF 33K 1/5W J N	33K	1
TH801-802	2438209770	THERMISTOR POWER TP 5D-15	THERMISTOR	2
RLY801	5528007200	RELAY 821-W-1A-C DC24V	RELAY	1
IC805	2118050410	IC TA7317P TOSHIBA	TA 7317P	1
Q801-802 Q804 Q809	2008606108-T	KTC3200-BL-AT	C3200BL	4
Q803 Q806-808	2028407990	KTC4370A-Y-U	KTC4370A	4
J26 J28	4428596606	LOCK WAFER LW-1143-06P	CON6P	2
CN801	4428595009	CON WAFER A2505WV2-09P	CON9P	1
ZD801	2058503112	DIODE ZENER 12BH	12BH	1
ZD803	2058502200	DIODE ZENER UZ-20BM(1N5250B)	UZ 20BM	1
ZD804	2058502240	DIODE ZENER UZ-24BM(1N5252B)	UZ 24BM	1
ZD802	2058500970	DIODE ZENER UZ-36BM (1N5258B)	UZ 36BM	1
HEAT SINK	7505299210	HEAT SINK PSM-301	HEAT SINK	1
	7505299340	HEAT SINK EQ-131	HEAT SINK	3
G802-803	4235007210	GND TERMINAL (POWER B'D)	GND	2
P101-103	4465998210	TERMINAL(250)PCB TAB(PC-1650)	250T	3
C101-102	3419510398	CAP AF HM 10000UF 100V 40P LUG(PC-1650)	10000/100	2
SW1	4835002710	INSULATION POWER SWITCH	POWER SW	1
FAN1-2	7308998630	FAN(A9225M12B-FS)	FAN	2
ACCORD	4308994110	AC CORD ASSY	AC CORD	1
1P	4355826508	PIN TERMINAL 1P (BK)	1P(BK)	1
	4678699410	CNT PLUG 1P	1P	1
	4355773913	CON ASS'Y 1P (BLACK)	BLACK	1
	4355768207	RING ASS'Y 1P (BLK) AWG18	BLK	1
	4355826408	PIN TERMINAL 1P (RD)	RD	1
	4355773810	CON ASS'Y 1P (RED)	RED	1
	4355773711	CON ASS'Y 1P (YELLOW)	YL	1

HEAD PAONE B'D (4003495400)

C949 C957 C974 C979			(N.C)	4
C950 C958	3409247071-T	CAP AF RSG 47UF 50V 6 P	47/50	2
C956	3409222171-T	CAP AF RSG 220UF 50V SG 10 P	220/50	1
C387-388 C442 C905-906 C911 C916-917 C926-927	3539103521-A	CAP CE YF 10000PF 25V Z AXIAL	10000P	21

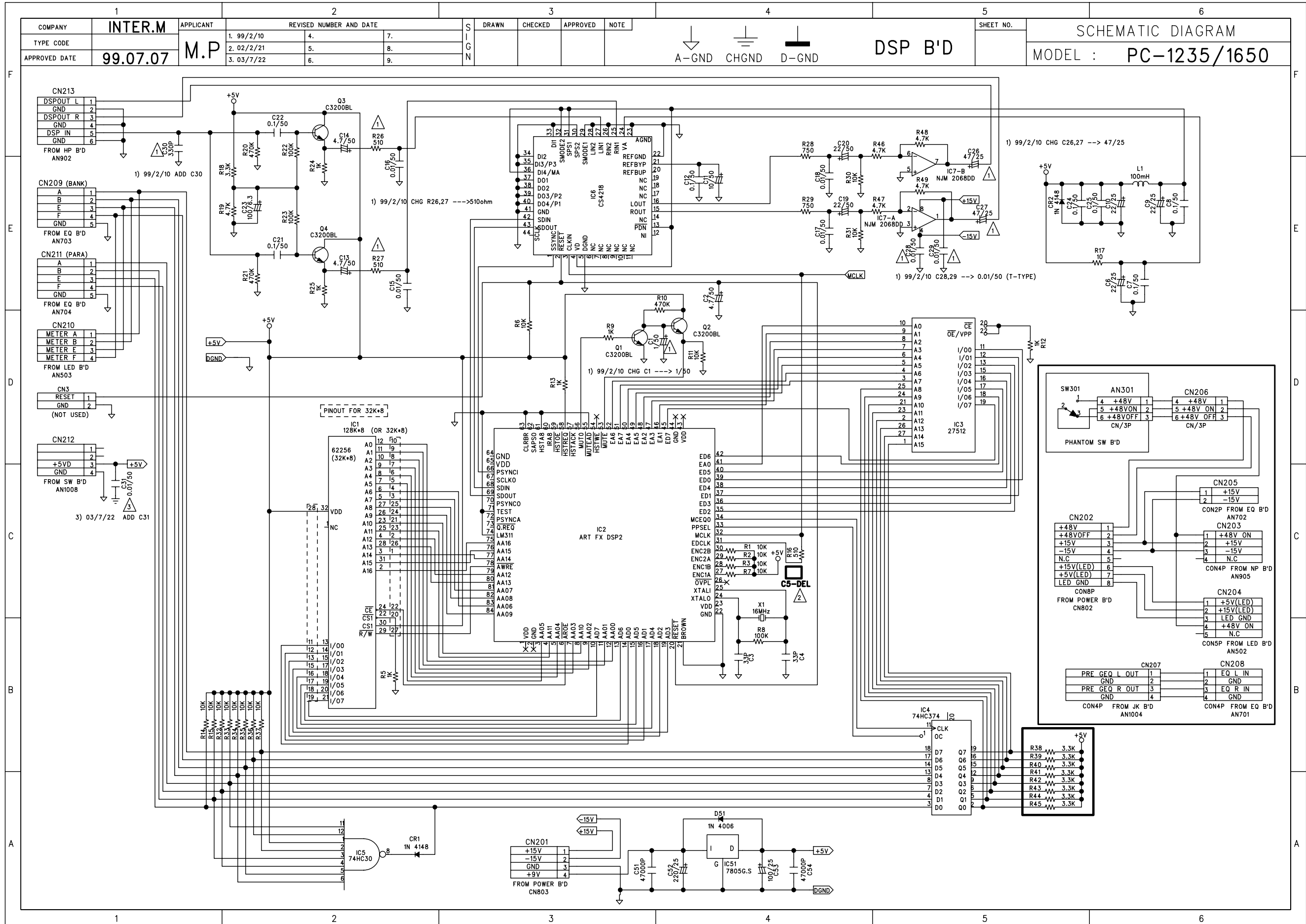
C932 C939-940 C951-952 C959 C964-965 C980-982				
C988 C994	3509102231-A	CAP CE YB 1000PF 50V K AXIAL	1000P	2
C902-903 C908-909 C913-914 C919-920 C922 C924 C928 C930 C946 C954 C971 C976 C984-986 C990-992	3509101231-A	CAP CE B 100PF 50V K AXIAL	100P	22
C936 C942 C961 C967	3509221231-A	CAP CE B 220PF 50V K AXIAL	220P	4
C947 C955 C972 C977	3529470311-A	CAP CE SL 47PF 50V J AXIAL	47P	4
C968	3529680311-A	CAP CE SL 68PF 50V J AXIAL	68P	1
C937 C943 C962	3529680311-A	CAP CE SL 68PF 50V J AXIAL	68P	3
AN901	4355825515	CON ASS'Y 2P	CON2P	1
CN333	4428594903	LA5268/LAB0640/2.5MM-03P	CON3P	1
AN904	4355825210	CON ASS'Y 4P	AN4P	1
CN903-905	4428595004	LW5267/LWB0640/2.5MM-04P	CON4P	3
AN902	4355825610	CON ASS'Y 6P	CON6P	1
AN1001	4355827612	CON ASS'Y 6P	AN6P	1
CN322 CN902	4428594906	LA5268/LAB0640/2.5MM-06P	AN6P	2
AN1002	4355827510	CON ASS'Y 8P	AN8P	1
EM901-902	3908101984	CRYSTAL DST310-92B271M100	270P	2
P901 P903	4355825003	CON ASS'Y 1P (RED)	RD	2
P902 P904	4355825103	CON ASS'Y 1P (BLACK)	BK	2
CN906-907	4428596604	LOCK WAFER LW-1143-04P	4P	2
D901	2058100996	DIODE RECTIFIER LT1N4006(4007)	1N4006	1
C933-934 C995-996	3409210141-T	CAP AF RSG 100UF 25V 6 P	100/25	4
C901 C904 C907 C910 C912 C915 C918 C921 C923 C925 C929 C931 C938 C944-945 C953 C963 C969-970 C975 C983 C989	3409222071-T	CAP AF RSG 22UF 50V 5 P	22/50	22
C935 C941 C948 C960 C966 C973 C978 C987 C993	3409222141-T	CAP AF RSG 220UF 25V J 8 P	220/25	9
IC306	2118010932	IC NJM 4556AD	4556D	1
JK902-903	4438194010	PHONE JACK BOARD 2P	JACK2P	2
JK1006-1009	4438192910	PHONE JACK (5P) METAL	JACK5P	4
JK901	4438097310	JACK PHONE 4P	JACK4P	1
JK1001-1004	4438192910	PHONE JACK (5P) METAL	JACK5P	4
JK1005	4438194610	RCA JACK BOARD 4P(24MM)	L	1
IC901 IC904 IC906	2118010432	IC NJM2068DD JRC	NJM 2068DD	3
IC902	2118010432	IC NJM2068DD JRC	NJM 2068DD	1
IC903	2118010590	IC NJM4558D JRC	NJM 4558D	1
IC905 IC907	2118220988	IC NJM 4580D	NJM 4580D	2
R946 R948	3009132973	RES CF 1.3K 1/5W J N	1.3K	2
R920 R922 R927 R929 R971 R979	3009101973	RES CF 100 1/5W J N	100	6
R977 R985	3039101472-T	RES MO 100 1W T	100 1W	2
R904 R908 R912 R916	3009104973	RES CF 100K 1/5W J N	100K	5

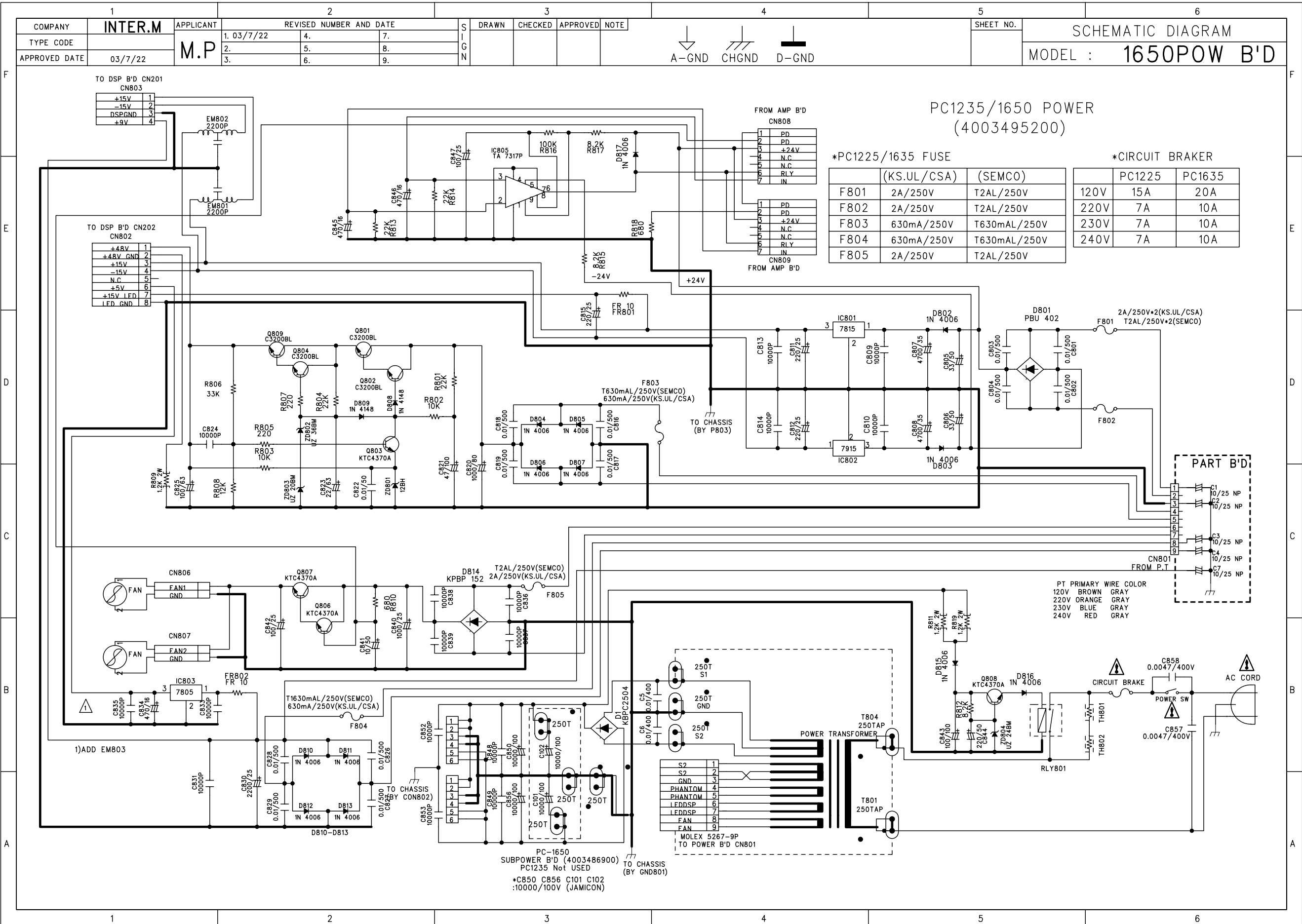
R959				
FR902 FR991	3089100275	RES NFR 10 1/4W J R PHILKO	10 1/4W	2
R918 R931 R976 R984	3009103973	RES CF 10K 1/5W J N	10K	4
R925 R932	3009153973	RES CF 15K 1/5W J N	15K	2
R923 R930 R949-951 R956 R961-963 R967	3009183973	RES CF 18K 1/5W J N	18K	10
R972 R974 R980 R982	3009221973	RES CF 220 1/5W J N	220	4
R901 R903 R905 R907 R909 R911 R913 R915	3009220973	RES CF 22 1/5W J N	22	8
R902 R906 R910 R914	3009223973	RES CF 22K 1/5W J N	22K	4
R936 R939	3009273973	RES CF 27K 1/5W J N	27K	2
R975 R983	3009332973	RES CF 3.3K 1/5W J N	3.3K	2
R952 R957 R964 R968	3009333973	RES CF 33K 1/5W J N	33K	4
R934-935 R937-938	3009433973	RES CF 43K 1/5W JN	43K	4
R919 R921 R926 R928 R933 R954 R966 R970 R973 R978 R981 R986	3009473973	RES CF 47K 1/5W J N	47K	12
R940-943	3009563973	RES CF 56K 1/5W J N	56K	4
R953 R958 R965 R969	3009750973	RES CF 75 1/5W JN	75	4
R924	3009822973	RES CF 8.2K 1/5W J N	8.2K	1
R945 R947	3009911973	RES CF 910 1/5W J N	910	2
R917 R955 R960	3009331973	RES CF 330 1/5W J N	330	3
RLY901	5528999800	RELAY 876A N-2C-S 12VDC	12V	1
Q901	2008606105-T	TR NPN KTA1266-Y-AT TO-92	A1266Y	1
VR901-904 VR909-910	3238088410	VR EVJ C50 F02 A24 20KA*2	20KA*2	6
VR905-908	3238088610	VR EVU E2J FK4 A24 20KA	20KA	4
VR911	3238088310	VR EVJ C50 F02 A53 5KA*2	5KA*2	1
AN1003	4355827412	CON ASS'Y 6P	CON6P	1
AN905	4355825312	CON ASS'Y 4P	CON4P	1
CN901	4428592514	WAFER BOX PIN (14P) PC-1635	AN14P	1
AN906	4355825507	CON ASS'Y 2P	CON2P	1
AN903	4355825408	CON ASS'Y 8P	CON8P	1
BLK901	6505949110	BRACKET PHONE JACK A"	BKT	1

ASS'Y

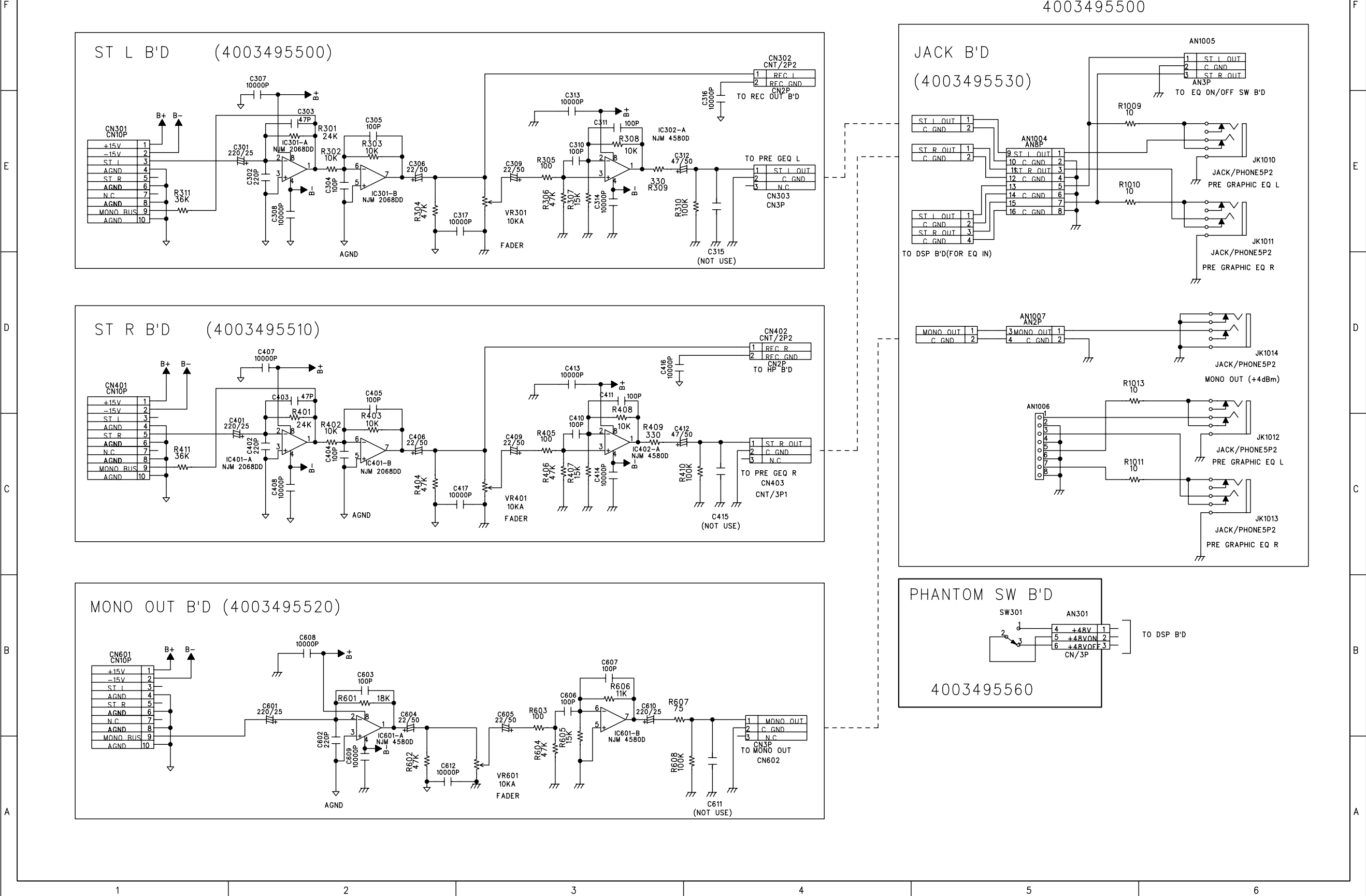
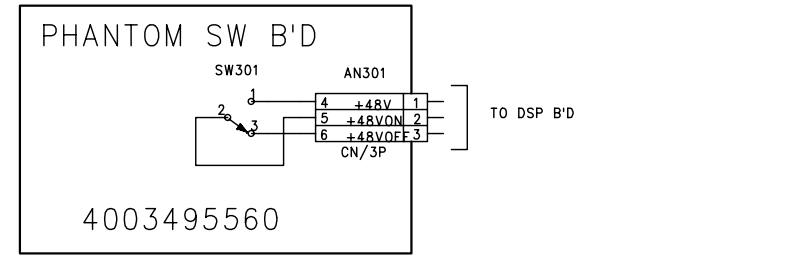
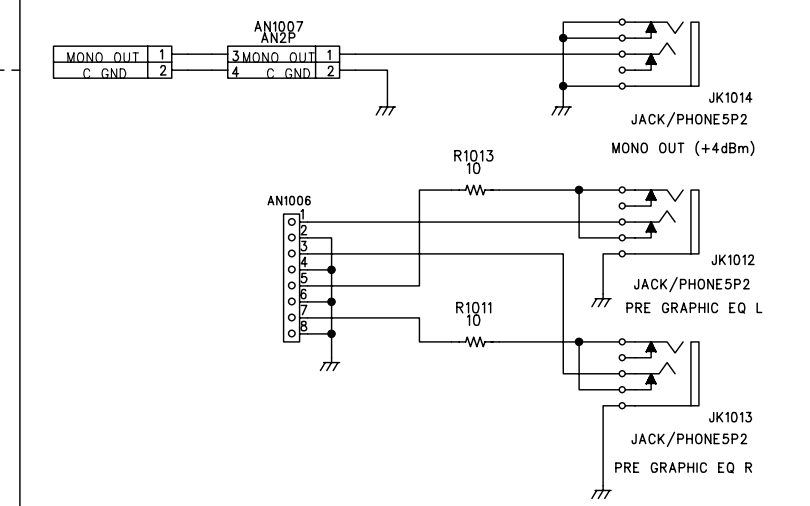
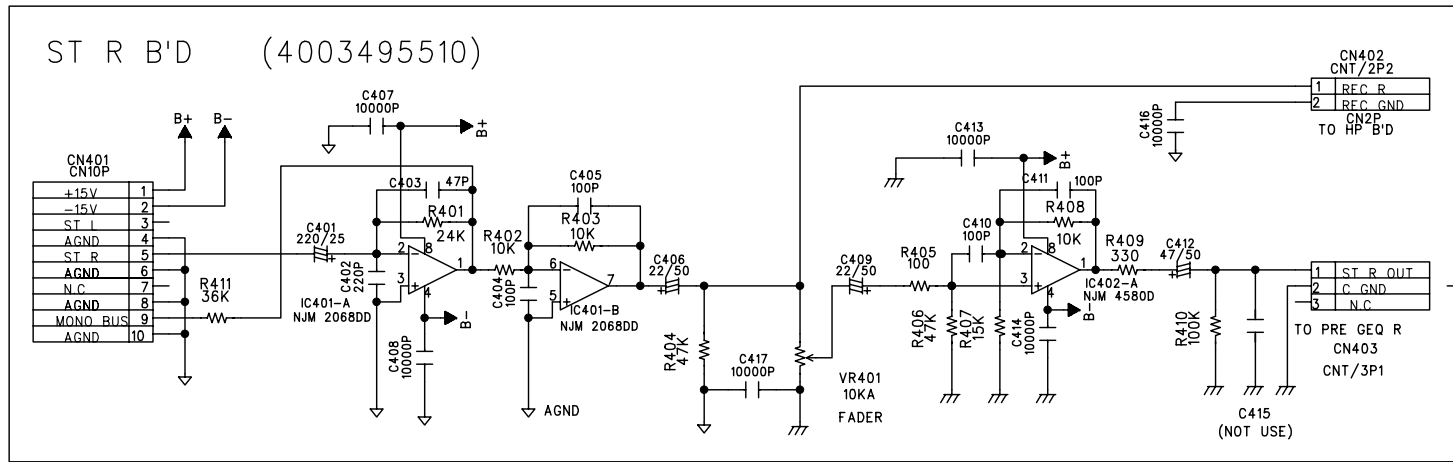
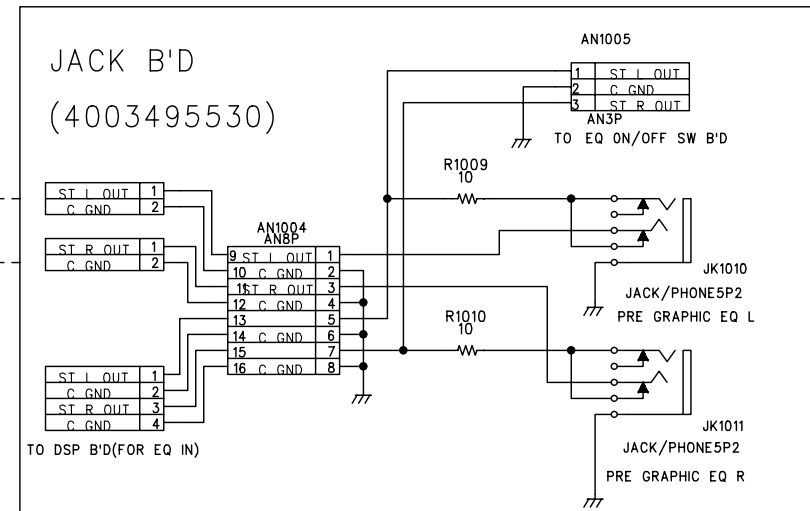
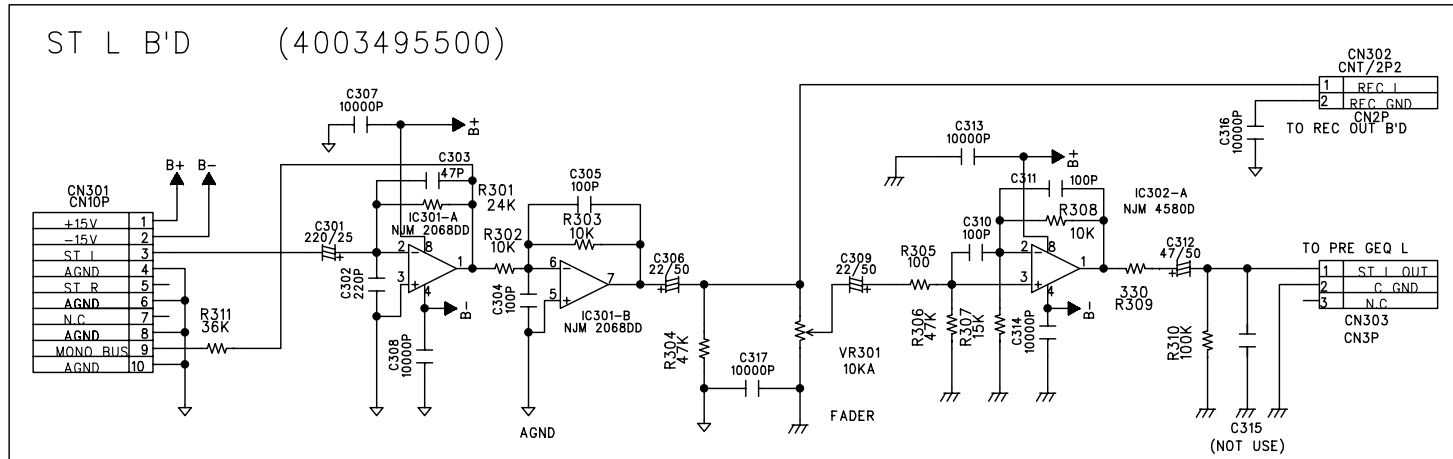
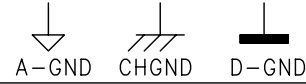
RECEPT	4355756807	RECEPT ASS'Y (472) 150MM	RECEPT	1
CON	4355826716	CON ASS'Y 4P (PC-1635)	4P	2
	4355823627	CON ASS'Y 8P	8P	1
	4355771611	CON ASS'Y 1P RED (250T) 230MM	RED	2
	4355825816	CON ASS'Y	ASSY	1
	4355826927	CON ASS'Y 6P(PC-1635)	6P	2
	4355826027	CON ASS'Y 1P (CNT)	CNT	1
	4355826110	MASS CON ASS'Y 10P	10P	1
	4355826310	MASS CON 14P (PC-1635)	14P	1
	4355823728	CON ASS'Y 4P	4P	1
	4355826814	CON ASS'Y 4P(PC-1225)	4P	2
	4355893510	CON ASS'Y 4P OUTPUT P 3500(PC-1225)	4P	2
	4355826210	MASS CON 14P (PC-1225)	14P	1
	GND	4355825716	GND TERMINAL 1P	GND
4355825724		GND TERMINAL 1P	GND	1
TWIST	6525099610	TWIST-LOK STANDOFF (3NB)	3NB	1

PT	2828072210	POWERTRANS PC-1235 (220V)	(PC-1235)	1
	2828058800	POWER TRANS PC-1235 100V	J	1
	2828064720	POWER TRASN (230V) PC-1235	R , C	2
	2828064730	POWER TRANS (240V) PC-1235	D	1
	2828064710	POWER TRANS (120V) PC-1235	E	1
	2828064800	POWER TRANS (220V) PC-1650	(PC-1650)	1
	2828064820	POWER TRANS (230V) PC-1650	R , C	2
	2828064830	POWER TRANS (240V) PC-1650	D	1
	2828064810	POWER TRANS (120V) PC-1650	E	1
AC CORD	4308994110	AC CORD ASS'Y		1
	4308999710	CORD AC DOME 3 CORES		1
	4308990610	AC CORD ASS'Y JIS (CMX-2464)	J	1
	4308990710	AC POWER CORD (END CUT) JIS	J	1
	4308994010	AC CORD ASS'Y ()	R	1
	4308994910	AC CORD (EUROPE 3 CORES)	R	1
	4308991210	AC CORD EL-210/ENDCUT(UK)	C	1
	4308992410	AC CORD ASS'Y EUROPE (BSI)	C	1
	4308994020	AC CORD ASS'Y (SAA)	D	1
	4308996110	AC CORD 250T ASS'Y (UL/CSA)	E	1
	4308999910	CORD AC UL 3CORES	E	1
FUSE	5508212739	FUSE#217F 20MM 2A/250V UCSKJ		3
	5508412729	FUSE#218T 20MM 2A/250V UCSKJ	J , R , C , D , E	15
	5508424230	FUSE 65TS 31.8MM 15A/250V KS		1
	5508424233	FUSE 65T 31.8MM 15A/250V U/C	J , R , C , D , E	5
F801	5508224230	FUSE NB 31.8MM 15A/250V KS	2A/250V*2(KS.UL/CSA)	1
F802	5508224230	FUSE NB 31.8MM 15A/250V KS	T2AL/250V*2(SEMCO)	1
F803	5508224230	FUSE NB 31.8MM 15A/250V KS	T630mAL/250V(SEMCO)	1
F804	5508224230	FUSE NB 31.8MM 15A/250V KS	T1630mAL/250V(SEMCO)	1
F805	5508224230	FUSE NB 31.8MM 15A/250V KS	T2AL/250V(SEMCO)	1
F806	5568224833	CIRCUIT BREAKER W28-XQ1A-15	15A(UL/CSA)	1
	5568224633	CIRCUIT BREAKER W28-XQ1A-12	12A(DOM.EUROPE)	
	5568224433	CIRCUIT BREAKER W28-XQ1A-20A	20A(UL/CSA)	
	5568224533	CIRCUIT BREAKER W28-XQ1A-10A	10A(DOM.EUROPE)	

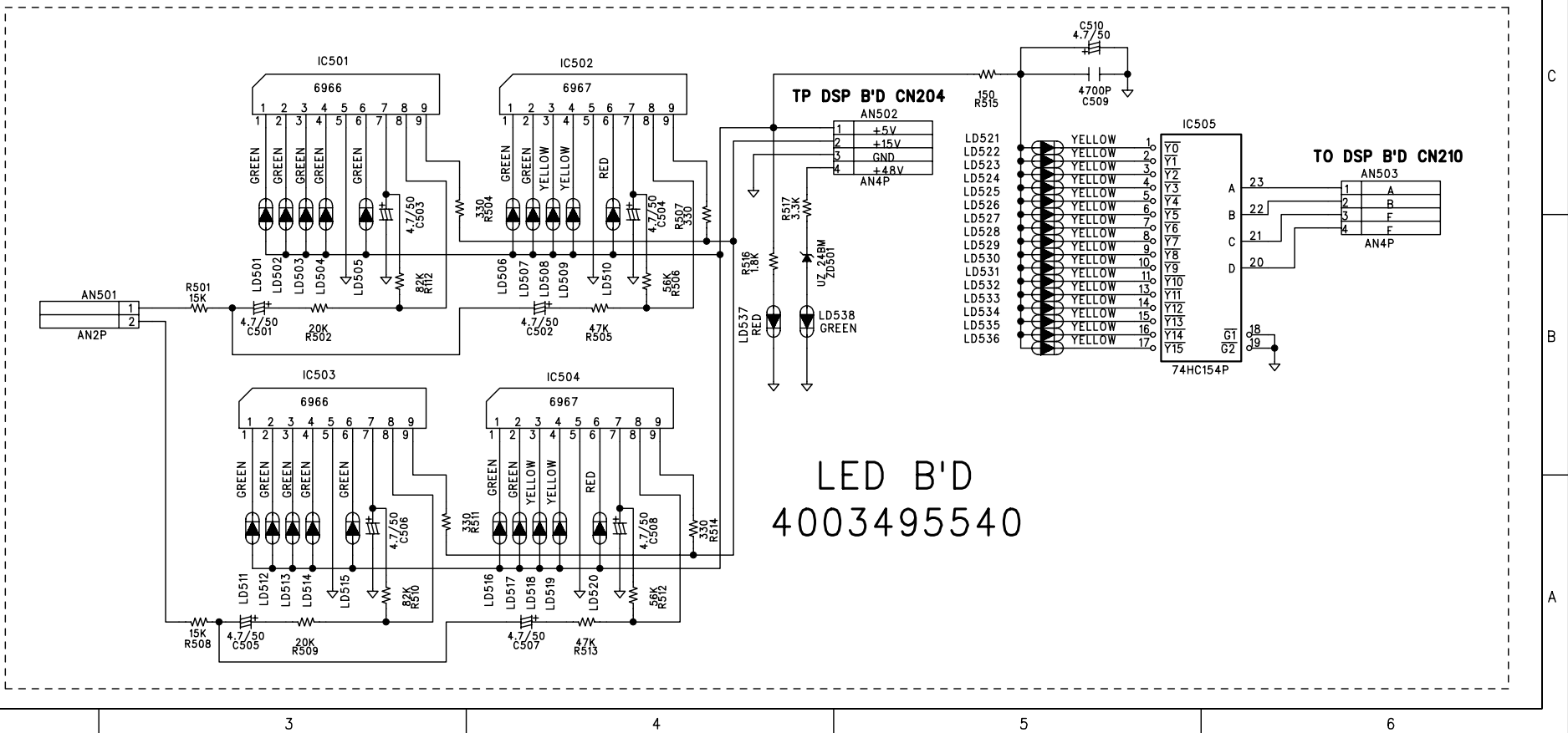
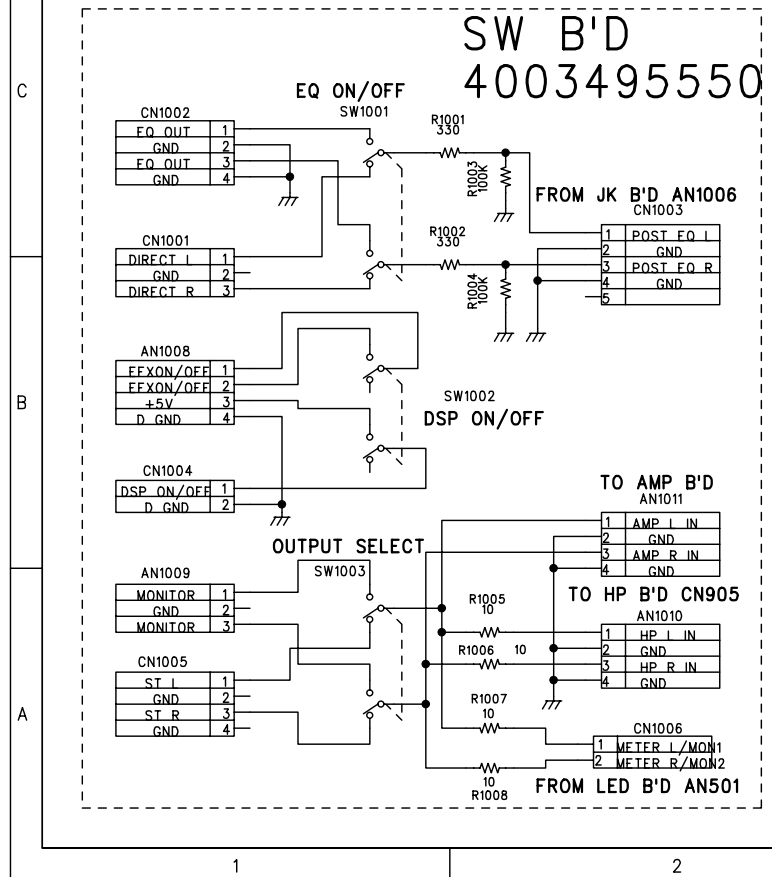
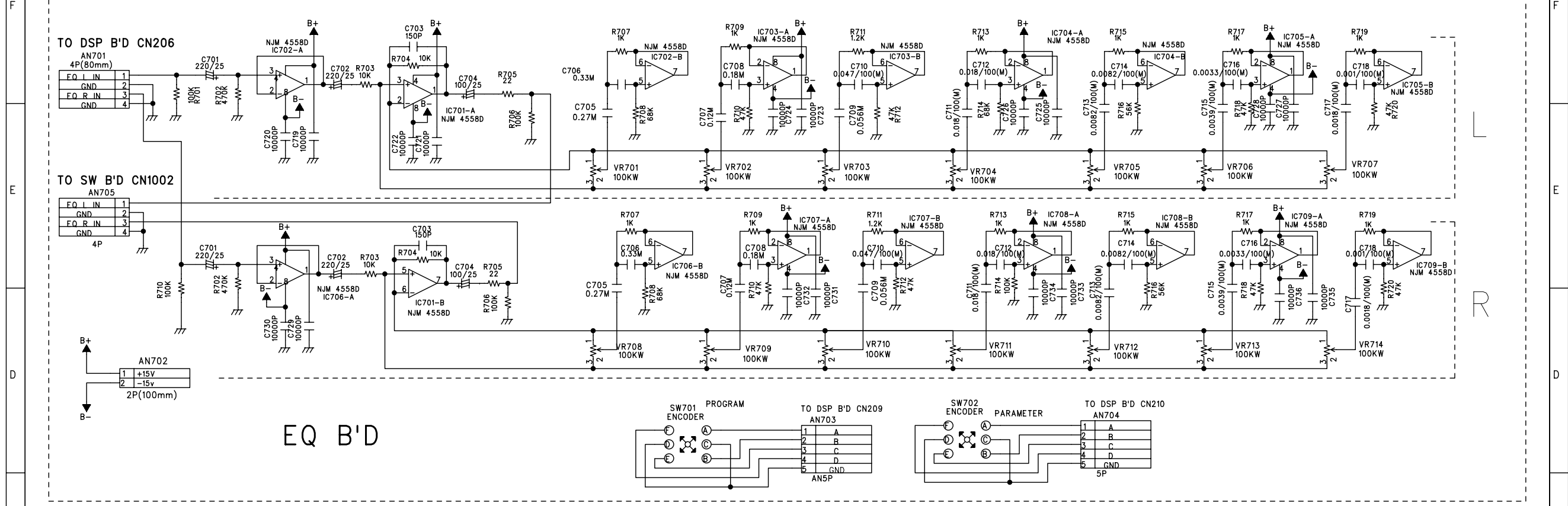
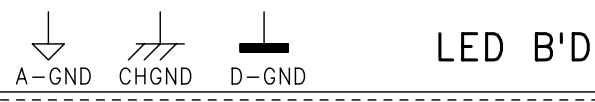


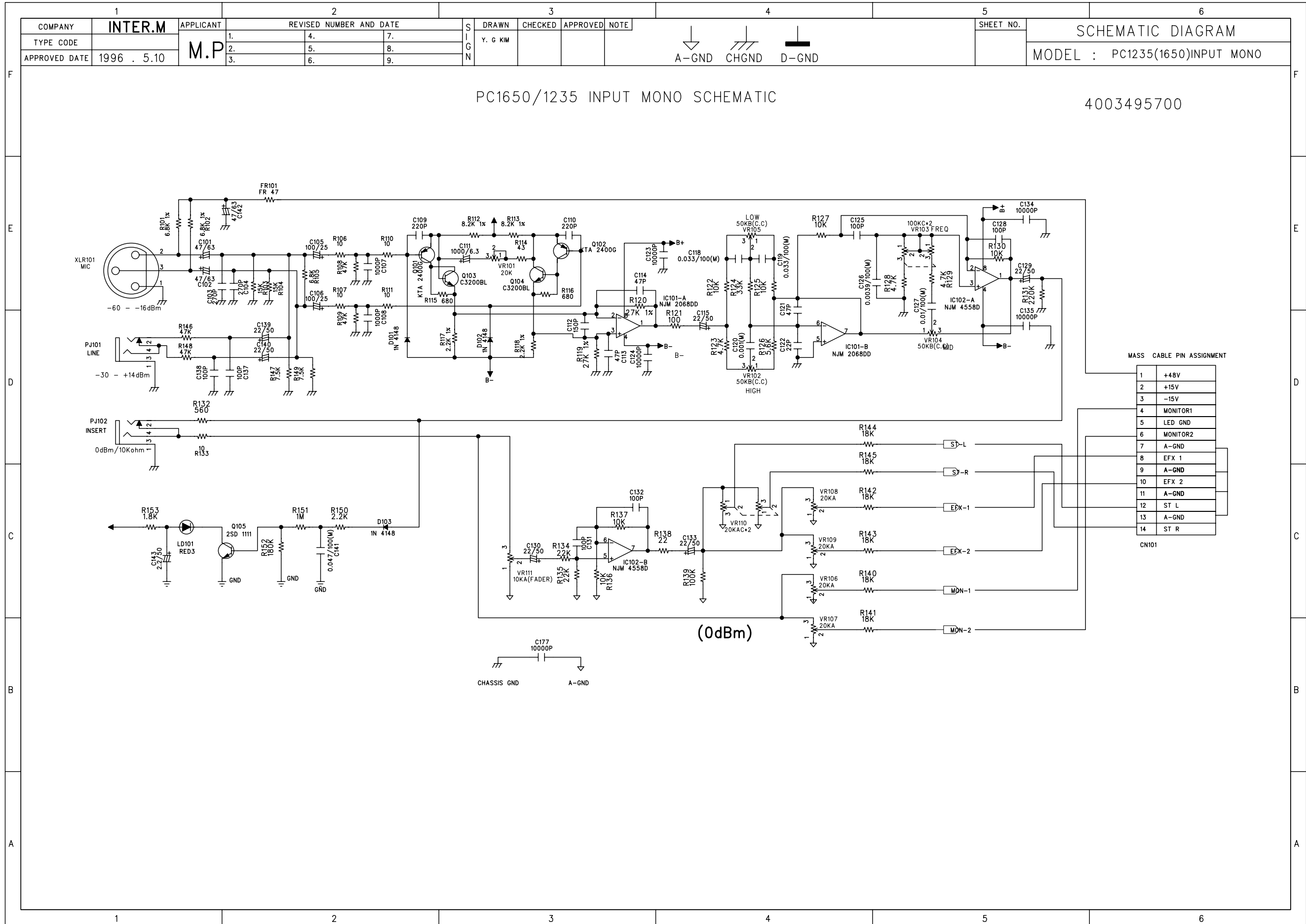


1		2			3		4		5		6	
COMPANY	INTER.M	APPLICANT	REVISED NUMBER AND DATE			DRAWN	CHECKED	APPROVED	NOTE	SHEET NO.	SCHEMATIC DIAGRAM	
TYPE CODE		M.P	1.	4.	7.	Y.G.KIM					MODEL : PC1235(1650) ST OUT	
APPROVED DATE	1996 . 1.15		2.	5.	8.						4003495500	

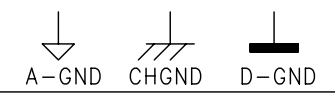


1		2		3		4		5		6	
COMPANY	INTER.M	APPLICANT	REVISED NUMBER AND DATE			DRAWN	CHECKED	APPROVED	NOTE	SHEET NO.	SCHEMATIC DIAGRAM
TYPE CODE		M.P	1.	4.	7.	M	Y	PARK			MODEL : PC-1235/1650
APPROVED DATE			2.	5.	8.	S					
			3.	6.	9.	I					



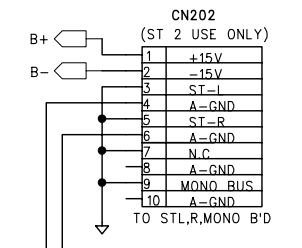
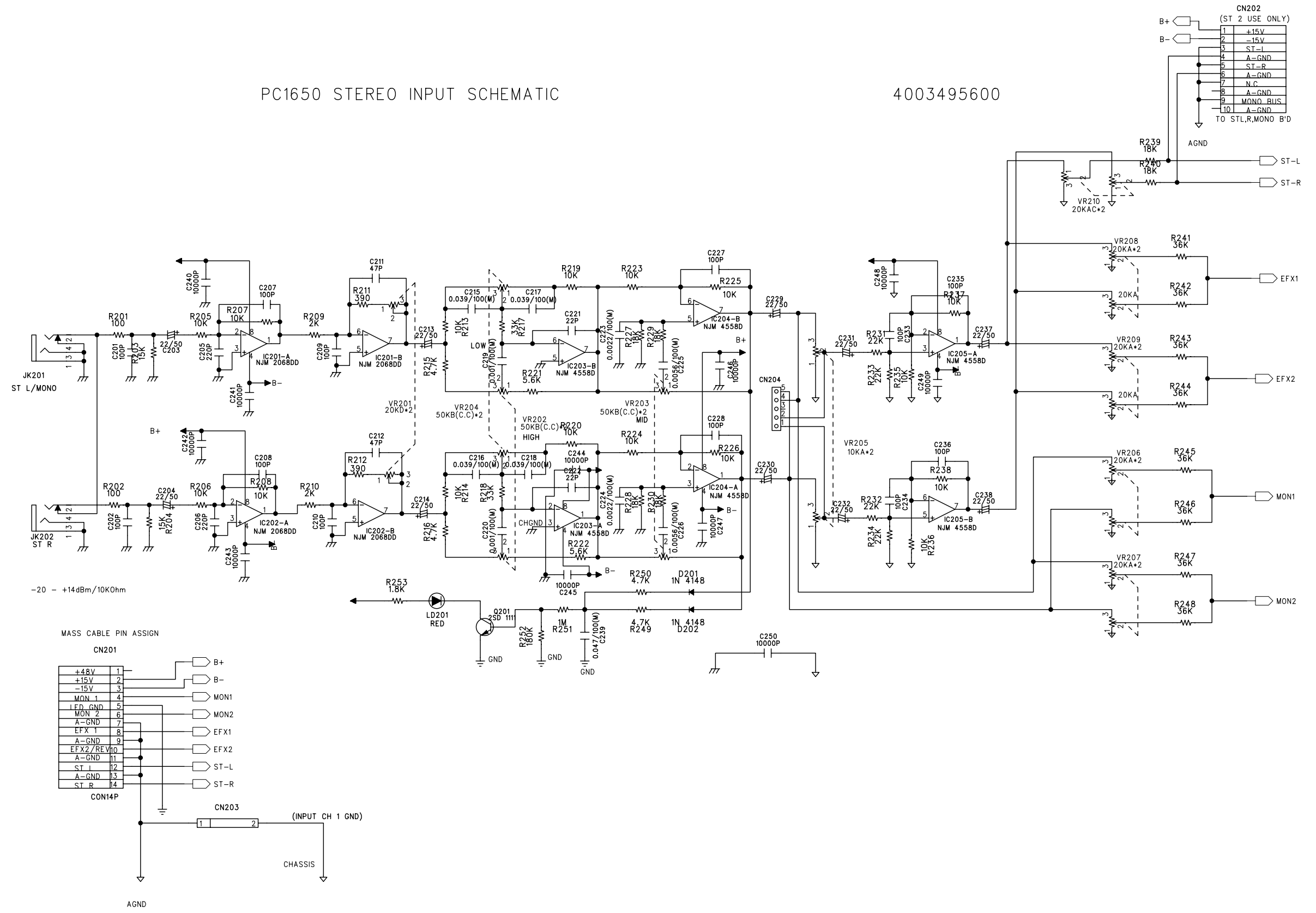


1		2		3		4		5		6	
COMPANY	INTER.M	APPLICANT	REVISED NUMBER AND DATE			DRAWN	CHECKED	APPROVED	NOTE	SHEET NO.	SCHEMATIC DIAGRAM MODEL : 1650ST B'D
TYPE CODE		M.P	1.	4.	7.	Y.G.KIM					
APPROVED DATE			2.	5.	8.						



PC1650 STEREO INPUT SCHEMATIC

4003495600



MASS CABLE PIN ASSIGN

