

SERVICE

MANUAL

M U L T I P L E C O M P A C T D I S C

PLAYER

CDC-9300

interM

ELECTRICAL PARTS LIST (CDC-9300)

Ref No.	Part No.	Description	Value	Qty	Remark
MAIN B'D (4002518400)					
C121	3609153120-T	CAP MA 0.015UF 100V J	0.015/100(M)	1	
C107-108 C120	3609102120-T	CAP CE B 0.001UF 50V J AXIAL	0.001(M)	3	
C165 C169 C194 C198	3509102530-T	CAP MA 0.001UF 100V MINI	0.001/50	4	
C128 C131	3609222120-T	CAP MA 0.0022UF 100V J	0.0022/100(M)	2	
C141	3539472331-A	CAP CE X 4700PF 16V M AXIAL	4700P	1	
C137 C139	3609103120-T	CAP MA 0.01UF 100V	0.01/100(M)	2	
C204	3509103530-T	CAP CE F 0.01UF 50V Z	0.01/50	1	
C113	3539223521-A	CAP CE F 22000PF 50V Z AXIAL	22000P	1	
C116 C134 C136 C166 C197	3609333120-T	CAP MA 0.033UF 100V J	0.033/100(M)	5	
C199-200	3609392120-T	CAP MA 0.0039UF 100V J	0.0039/100(M)	2	
C103-104 C152 C155 C157 C167 C171 C173-174 C177 C179-180 C182 C184 C187	3539473531-A	CAP CE F 4700PF 50V J AXIAL	4700P	15	
C126	3609473120-T	CAP MA 0.047UF 100V	0.047/100	1	
C119	3609472120-T	CAP MA 0.0047UF 100V J	0.0047/100	1	
C123 C127	3609104122-T	CAP MA 0.1UF 100V J SMALL	0.1/100(M)	2	
C168 C195	3509101231-A	CAP CE B 100PF 50V K AXIAL	100P	2	
C162-163 C188 C193	3509271231-A	CAP CE B 270PF 50V K AXIAL	270P	4	
C148-149	3509330130-T	CAP CE SL 33PF 50V J	33P	2	
C158 C160 C189 C192	3529330311-A	CAP CE SL 33PF 50V J AXIAL	33P	4	
C159 C161	3539473531-A	CAP CE F 47000PF 50V Z AXIAL	47000P	2	
C190-191	3509471231-A	CAP CE B 470PF 50V K AXIAL	470P	2	
C129-130 C140	3509561231-A	CAP CE B 560PF 50V K AXIAL	560P	3	
D111-115 D117-119	2058304100	DIODE IN4148M	1N4148	8	
D101-105	2058100996	DIODE RECTIFIER LT1N4006(4007)	1N4006	5	
C115 C138 C202	3409247871-T	CAP AF RSG 0.47UF 50V 5 P	0.47/50	3	
C112	3409210971-T	CAP AF RSG 1UF 50V 5 P	1/50	1	
C142 C196	3409210071-T	CAP AF RSG 10UF 50V 5 P	10/50	2	
C114 C145	3409210141-T	CAP AF RSG 100UF 25V 6 P	100/25	2	
C125	3409222071-T	CAP AF RSG 22UF 50V 5 P	22/50	1	
C109-110	3409222171-T	CAP AF RSG 220UF 50V SG 10 P	220/50	2	
C101-102	3408222241	CAP RSA 2200UF 25V SNAP 16 P	2200/25	2	
C124	3409233971-T	CAP AF RSG 3.3UF 50V 5 P	3.3/50	1	
C118	3409247971-T	CAP AF RSG 4.7UF 50V 5 P	4.7/50	1	
C105-106 C122	3409247071-T	CAP AF RSG 47UF 50V 6 P	47/50	3	
C1 C111 C117 C132-133 C135 C143 C146-147 C150 C153-154 C156 C164 C170 C172 C175-176 C178 C181 C183 C185-186 C201 C203	3409247041-T	CAP AF RSG 47UF 25V 5 P	47/25	25	
IC110-111	2118012526	IC LM833N NATIONAL	LM 833L	2	
IC103 IC108	2118012352	IC NJM 4560D JRC	NJM4560D	2	
R208 R231	3009122973	RES CF 1.2K 1/5W J N	1.2K	2	
R101-102 R174 R194 R197-199 R202 R216-217 R226 R234-235 R243	3009101973	RES CF 100 1/5W J N	100	13	
R106 R108-109 R115 R121-122 R132-134 R137-138 R154 R162 R170 R179 R184 R193 R201	3009104973	RES CF 100K 1/5W J N	100K	17	
R105	3009100973	RES CF 10 1/5W J N	10	1	
R144 R2 R149 R158-161 R172-173 R185 R188-189 R191 R196 R255	3009103973	RES CF 10K 1/5W J N	10K	14	
R104 R112 R163 R165	3009124973	RES CF 120K 1/5W J N	120K	4	
R228 R264	3009123973	RES CF 12K 1/5W J N	12K	2	
R192	3009121973	RES CF 120 1/5W J N	120	1	
R200	3009151973	RES CF 150 1/5W J N	150	1	

R167	3009153973	RES CF 15K 1/5W J N	15K	1	
R142 R157 R175 R180-182 R190 R195	3009102973	RES CF 1K 1/5W J N	1K	8	
R143 R205 R233	3009105973	RES CF 1M 1/5W J N	1M	3	
R156	3009203973	RES CF 20K 1/5W J N	20K	1	
R128 R171 R186-187	3009223973	RES CF 22K 1/5W J N	22K	4	
R176 R227	3009243973	RES CF 24K 1/5W JN CDC-9300	24K	2	
R183	3009274973	RES CF 270K 1/5W J N	270K	1	
R214-215 R240-241	3009273973	RES CF 27K 1/5W J N	27K	4	
R256-257	3009339973	RES CF 3.3 1/5W JN CDC-9300	3.3	2	
R220	3009335973	RES CF 3.3M 1/5W J N	3.3M	1	
R110-111 R164	3009362973	RES CF 3.6K 1/5W J N	3.6K	3	
R117-118 R120 R129-131 R145-148	3009333973	RES CF 33K 1/5W J N	33K	11	
R207 R232	3009391973	RES CF 390 1/5W J N	390	2	
R107 R116	3009393973	RES CF 39K 1/5W J N	39K	2	
R103 R135 R177-178	3009472973	RES CF 4.7K 1/5W J N	4.7K	4	
R139	3009474973	RES CF 470K 1/5W J N	470K	1	
R141 R153 R155 R206	3009473973	RES CF 47K 1/5W J N	47K	4	
R113-114 R123-124 R203 R229	3009512973	RES CF 5.1K 1/5W J N	5.1K	6	
R116	3009332973	RES CF 3.3K 1/5W J N	3.3K	1	
R218-219 R221	3009561973	RES CF 560 1/5W J N	560	3	
R209 R242	3009682973	RES CF 6.8K 1/5W J N	6.8K	2	
R222-225	3009681973	RES CF 680 1/5W J N	680	4	
R150-152	3009684973	RES CF 680K 1/5W J N	680K	3	
R140 R204 R210-213 R230 R236-239	3009822973	RES CF 8.2K 1/5W J N	8.2K	11	
R168-169	3009823973	RES CF 82K 1/5W J N	82K	2	
Q126 Q128-Q130	2008610601-T	TR NPN 2SD 1302S	2SD 1302S	4	
Q106-108 Q123-125	2008606104	DEL TR NPN KTC1815Y (KTC3198)	KTC 1815Y	6	
Q102 Q104 Q112 Q118 Q120	2008609104	MPSA06-AT	MPSA 06	5	
Q115-116	2028348100-T	TR NPN MPSW01A MOTOROLA	MSPW 01A	2	
Q123-125	2008606104	DEL TR NPN KTC1815Y (KTC3198)	KTC 1815Y	3	
Q109 Q122 Q127	2008606105-T	TR NPN KTA1266-Y-AT TO-92	KTA1266Y	3	
Q101 Q103 Q105 Q113 Q119 Q121	2008209100	MPSA56-AT	MPSA 56	6	
Q114 Q117	2028048100-T	TR PNP MPSW51A MOTOROLA	MPSW 51A	2	
Q110-111	2008600100-T	TR NPN DTC 144ES	DTC 144E	2	
VR101 VR103-104	3248322320	RES SEMI RH0615C100223	22KB	3	
VR102	3248347320	RES RH0615C100473	47KB	1	
VR105	3248310220	RES SEMI RH0615C100102	1KB	1	
D107	2058502300	DIODE ZENER UZ-30BM(1N5256B)	UZ 30BM	1	
D116	2058502043	DIODE ZENER UZ-4.3BM(1N5229B)	UZ 4.3BM	1	
D108-109	2058502082	DIODE ZENER UZ-8.2BM(1N5237B)	UZ 8.2BM	2	
D106	2058502091	DIODE ZENER UZ-9.1B(1N5239B)	UZ 9.1BM	1	
CNT110	4428594902	LA5268/LAB0640/2.5MM-02P	5268-02A	1	
CNT114	4428699030	Header Right Angle 5268-03A	5268-03A	1	
CNT103	4428699140	PLUG 4P	PLUG 4P	1	
CNT107-A	4428594904	LA5268/LAB0640/2.5MM-04P	5268-04A	1	
CNT104-105 CNT108	4428594905	LA5268/LAB0640/2.5MM-05P	5268-05A	3	
CNT106	4428594906	LA5268/LAB0640/2.5MM-06P	5268-06A	1	
CNT101-102	4428699180	PLUG 8P	PLUG 8P	2	
CNT113	4428699190	PLUG 9P	PLUG 9P	1	
IC109	2118060300	IC CXA 1081S SONY CDC-9300	CXA 1081S	1	
IC113	2128000200	IC YM3433B-D YAMAHA CDC-9300	YM 3433B-D	1	
IC105	2128130300	IC CXD 1167Q SONY CDC-9300	CXD 1167	1	
IC112	2128820200	IC SAA 7350GP/M3 CDC-9300	SAA 7350	1	
IC107	2118001300	IC CXA1082BS SONY CDC-9300	CXA 1082BS	1	
IC104	2138322125	IC DWP-304C,CXP50116-506Q(CUP)	DWP 304C	1	
IC101	2128611600	IC 7905 COMMON	7905	1	
IC102	2128611206	IC 7805 G.S	7805	1	
X-TAL101	3908101060	CRYSTAL 16.934MHZ 49/U 20PF	CRYSTAL 16.934MHZ	1	
FIP101	2328130523	FIP 11RM8 CDC-9300	FIP 11RM8	1	

RCA P.C. B'D (4002518410)

CNT114	4428599030	Header Right Angle 5268-03A	5268-03A	1	
--------	------------	-----------------------------	----------	---	--

SENROR P.C. B'D (4002518420)

CNT107-A	4355933610	CON ASS'Y 4P TO SENSOR A B'D	CON ASS'Y 4P	1	
CNT107	4428595804	GIL-S-4P-S2T2-EF CDC-9300	GIL-S-4P-S2T2-EF	1	

TRANS P.C. B'D (4003319401)

CNT206	4458933108	CON ASS'Y 6P TO MAIN B'D	CON ASS'Y 6P	1	
--------	------------	--------------------------	--------------	---	--

CHUCK MOTOR P.C. B'D (4003319402)

CNT104	4355933510	CON ASS'Y 5P TO MAIN B'D	CON ASS'Y 5P	1	
--------	------------	--------------------------	--------------	---	--

ROULETTE MOTOR P.C. B'D (4003319403)

CNT107	4355933610	CON ASS'Y 4P TO SENSOR A B'D	CON ASS'Y 4P	1	
CNT201	4428595003	LW5267/LWB0640/2.5MM-03P	5267-3P	1	

L MOTOR P.C. B'D (4003319404)

CNT108	4355933910	CON ASS'Y 5P TO MAIN B'D	CON ASS'Y 5P	1	
--------	------------	--------------------------	--------------	---	--

DISC SENSOR P.C. B'D (4003319406)

CNT201	4355933212	CON ASS'Y 3P TO S MOTOR B'D	CON ASS'Y 3P	1	
--------	------------	-----------------------------	--------------	---	--

FUNCTION P.C. B'D (4003319407)

CNT202	4355934112	CON ASS'Y 7P TO FRONT B'D	CON ASS'Y 7P	1	
--------	------------	---------------------------	--------------	---	--

FROUNT P.C. B'D (4003319408)

CNT111	4355933407	CON ASS'Y 9P TO MAIN B'D	CON ASS'Y 9P	1	
CNT202	4428699170	GIL-S-7P-S2L2-EF ANGLE CDC9300	GIL-S-7P-S2L2-EF	1	

TIMER S/W P.C. B'D (4003319409)

CNT110	4355934018	CON ASS'Y 2P TO MAIN B'D	CON ASS'Y 2P	1	
--------	------------	--------------------------	--------------	---	--

POWER S/W P.C. B'D (4003319410)

CNT105	4355934227	CON ASS'Y 5P TO MAIN B'D	CON ASS'Y 5P	1	
--------	------------	--------------------------	--------------	---	--

MOTOR P.C. B'D (4003319408)

CNT103	4355933810	CON ASS'Y 4P TO MAIN B'D	CON ASS'Y 4P	1	
--------	------------	--------------------------	--------------	---	--

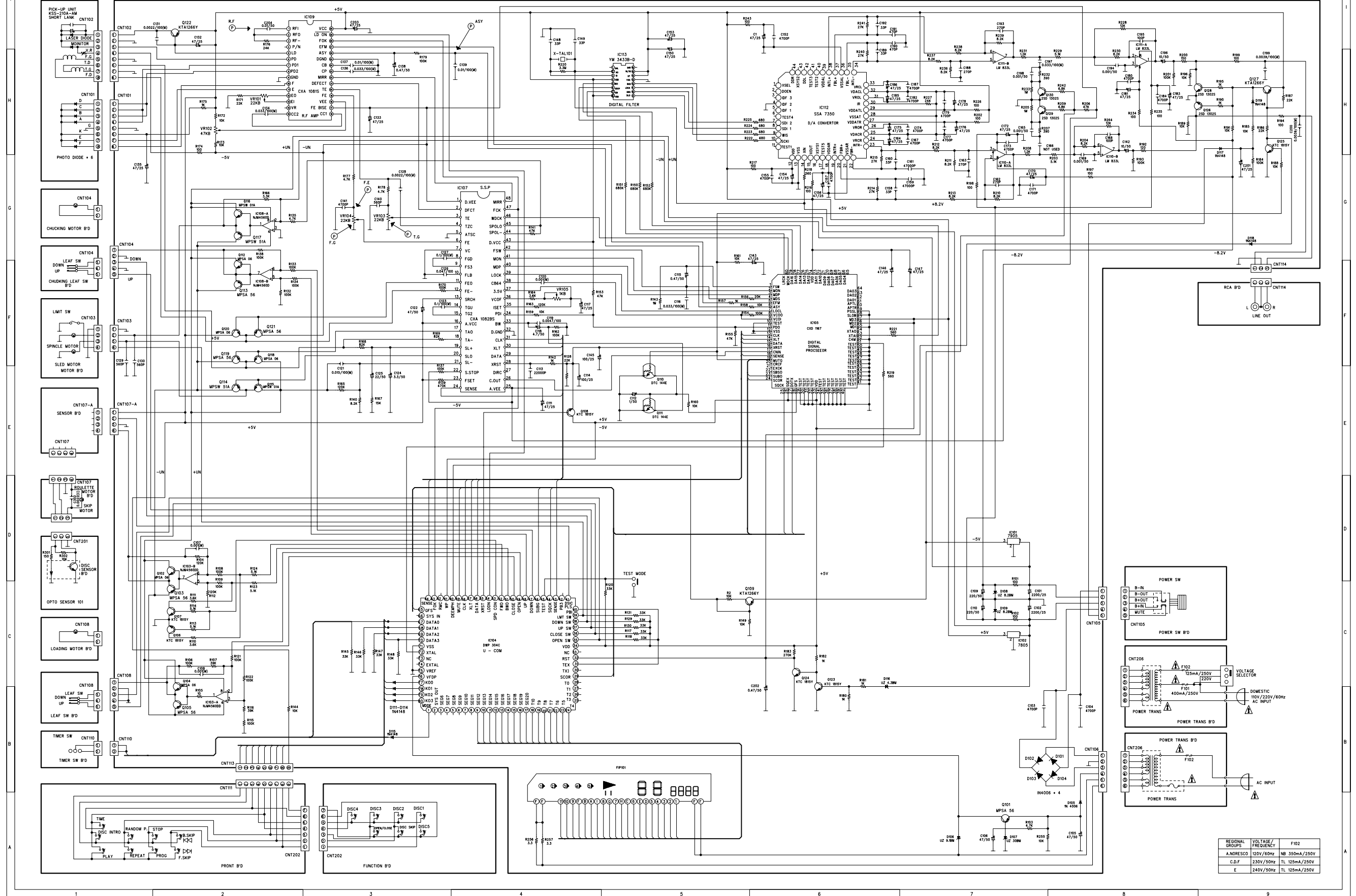
PICK-UP UNIT

CNT101	4355933710	CON ASS'Y 8P TO MAIN B'D	CON ASS'Y 8P	1	
CNT102	4355934310	CON ASS'Y 8P(SILD)TO MAIN B'D	CON ASS'Y 8P(SILD)	1	

ASS'Y

TRANS	2828081810	TRANS POWER 110V/220V CDC-9300	TRANS POWER	1	
	2828082810	TRANS POWER 120V CDC-9300	TRANS POWER	1	A
	2828083810	TRANS POWER 230V CDC-9300	TRANS POWER	1	B
	2828084810	TRANS POWER 240V CDC-9300	TRANS POWER	1	C
F/Holder	4458999110	FUSE CLIP 5*20	FUSE CLIP 5*20	4	
	4458999110	FUSE CLIP 5*20	FUSE CLIP 5*20	2	A ,B ,C
F101	5508411636	FUSE TS20MM 400MA/250V U/C/S/V	FUSE TS20MM 400MA/250V	1	
F102	5508410836	FUSE TS20MM 125MA/250V U/C/S/V	FUSE TS20MM 125MA/250V	1	
(F102)	5508211233	FUSE NB 20MM 250MA/250V U/C	FUSE NB 20MM 250MA/250V	1	A
(F102)	5508412434	FUSE 218T20MM 1.25A/250V UCSKJ	FUSE 218T20MM 1.25A/250V	1	B ,C
AC CORD	4308999110	CORD AC POWER SUPPLY DOME	CORD AC POWER SUPPLY DOME	1	

SCHEMATIC DIGRAM



REGIONAL GROUPS	VOL TAGE / FREQUENCY	F102
A.NORESCO	120V/60Hz	NB 350mA/250V
C.D.F.	230V/50Hz	TL 125mA/250V
E	240V/50Hz	TL 125mA/250V